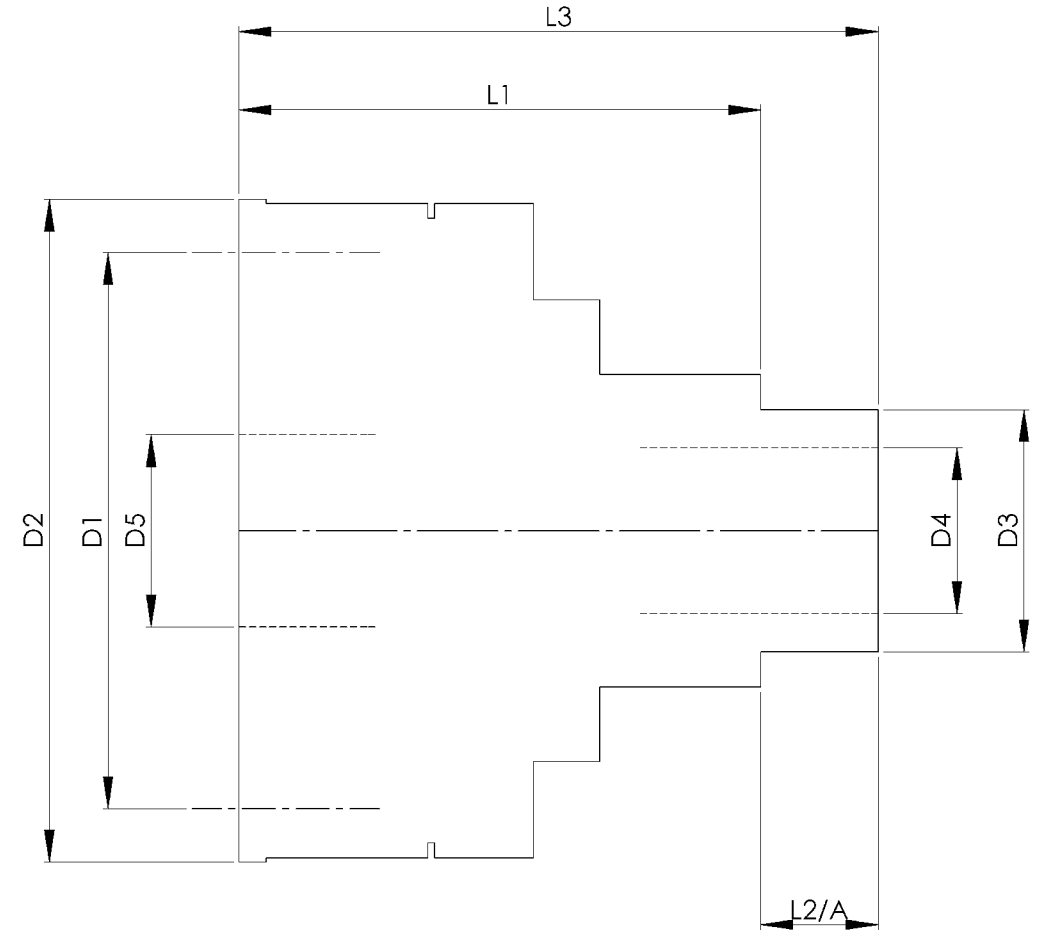


		INCH	MM
CROWN WHEEL BOLT PCD	D1	3.150	80
No. OF BOLTS		6	6
THREAD / THRO' HOLE		M10x1.25	M10x1.25
CROWN WHEEL SPIGOT DIA	D2	3.7020	94.0
BEARING DIA	D3	1.3786	35.0
BEARING DISTANCE	L1	2.327	59.1
SPIGOT LENGTH	L2	0	0
	L2/A	0.728	18.5
OVERALL LENGTH	L3	3.055	77.6
BEARING/CROWN WHEEL	L4	0	0
BORE	D4	1.105	28.1
	D5	1.450	36.8
DRIVE SHAFT SPLINE:-			
No. OF TEETH		20	
PITCH		24/48 DP	
TYPE		FILLET ROOT	SIDE FIT
PRESSURE ANGLE		45 DEG	



TITLE F.W.D. DIFF DATA SHEET.
SCALE 1:1 U.O.S. SHEET 1 OF 1
<b>Drg. No.</b> QDF11H

**Quaife Design & Development.**

IF IN DOUBT, ASK.

THIS DRAWING OR DESIGN IS STRICTLY CONFIDENTIAL & THE COPYRIGHT THEREIN IS THE EXCLUSIVE PROPERTY OF RUTLAND TECHNOLOGIES LTD. AND MAY NOT BE USED, COPIED OR REPRODUCED WITHOUT THE WRITTEN PERMISSION.

FINISH. MACH,	GRIND@G
LIMITS. FRACT. ± 1/64".	
DEC. ± 0.005".	
MATERIAL.	
TREATMENT.	
ISSUE. 01 DATE. 23.5.05	
DRAWN BY. M.L.M.	
<b>Used In.</b> CITREON 2CV	