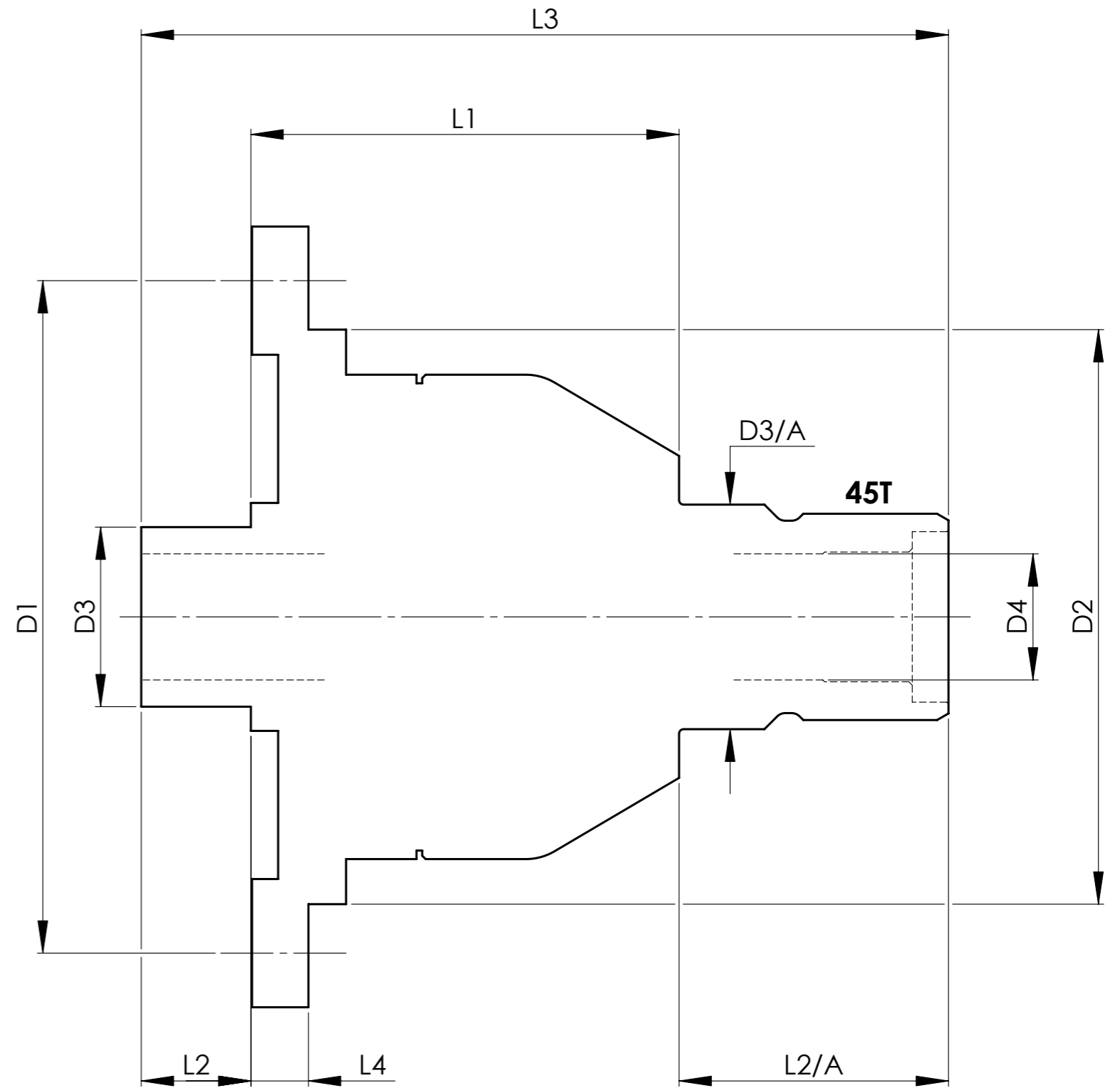


		INCH	MM
CROWN WHEEL BOLT PCD	D1	5.900	150
No. OF BOLTS		12	12
THREAD / THRO' HOLE		0.418	10.6
CROWN WHEEL SPIGOT DIA	D2	5.041	128.0
BEARING DIA	D3	1.5755	40.0
	D3/A	1.9702	50.0
BEARING DISTANCE	L1	3.757	95.4
SPIGOT LENGTH	L2	0.962	24.4
	L2/A	2.364	60.0
OVERALL LENGTH	L3	7.083	179.9
BEARING/CROWN WHEEL	L4	0.505	12.8
BORE	D4	1.1065	28.1

DRIVE SHAFT SPLINE:-

No. OF TEETH	26
PITCH	1 MOD
TYPE	
PRESSURE ANGLE	45 DEG



TITLE F.W.D. DIFF DATA SHEET.
SCALE 1:1 U.O.S. SHEET 1 OF 1
Drg. No. QDF14J

Quaife Design & Development.

IF IN DOUBT, ASK.

THIS DRAWING OR DESIGN IS STRICTLY CONFIDENTIAL & THE COPYRIGHT THEREIN THE EXCLUSIVE PROPERTY OF RT QUAIPE ENGINEERING LTD. AND MAY NOT BE USED COPIED OR EXHIBITED WITHOUT THEIR WRITTEN PERMISSION.

FINISH. MACH,	GRIND@G
LIMITS. FRACT. ± 1/64".	
DEC. ± 0.005".	
MATERIAL.	
TREATMENT.	
ISSUE. 01 DATE. 7.2.08	
DRAWN BY. J.P.D.	
Used In.	VOLVO S60 - 4WD