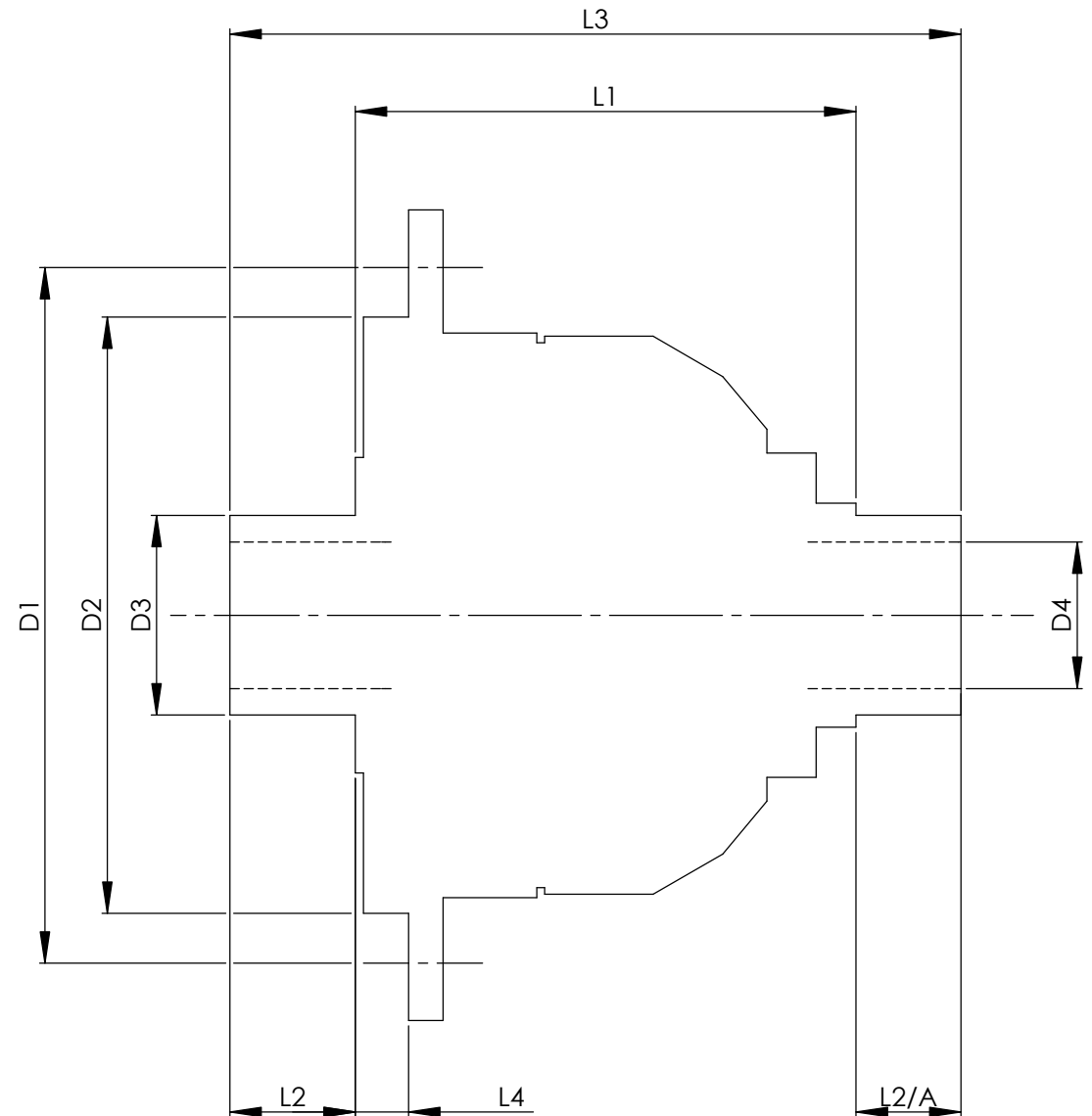


		INCH	MM
CROWN WHEEL BOLT PCD	D1	5.040	128
No. OF BOLTS		6	6
THREAD / THRO' HOLE		M12x1	M12x1
CROWN WHEEL SPIGOT DIA	D2	4.2518	108.0
BEARING DIA	D3	1.5170	38.5
BEARING DISTANCE	L1	3.735	94.9
SPIGOT LENGTH	L2	0.670	17.0
	L2/A	0.670	17.0
OVERALL LENGTH	L3	5.075	129.0
BEARING/CROWN WHEEL	L4	0.630	14.7
BORE	D4	1.0655	27.0
DRIVE SHAFT SPLINE:-			
No. OF TEETH		23	
PITCH		24/48 DP	
TYPE		FLAT ROOT	SIDE FIT
PRESSURE ANGLE		30 DEG	



TITLE F.W.D. DIFF DATA SHEET.

SCALE 1:1 U.O.S. SHEET 1 OF 1

Drg. No. QDF16E

Quaife Design & Development.

IF IN DOUBT, ASK.

THIS DRAWING OR DESIGN IS STRICTLY CONFIDENTIAL & THE COPYRIGHT THEREIN IS THE EXCLUSIVE PROPERTY OF RT SQUARE ENGINEERING LTD. AND MAY NOT BE USED COPIED OR EXHIBITED WITHOUT THEIR WRITTEN PERMISSION.

FINISH. MACH.	GRIND@G
LIMITS. FRACT. ± 1/64"	
DEC. ± 0.005"	
MATERIAL.	
TREATMENT.	
ISSUE. 01 DATE. 24.5.05	
DRAWN BY. M.L.M.	
Used In. TOYOTA EP71 (QJ008)	