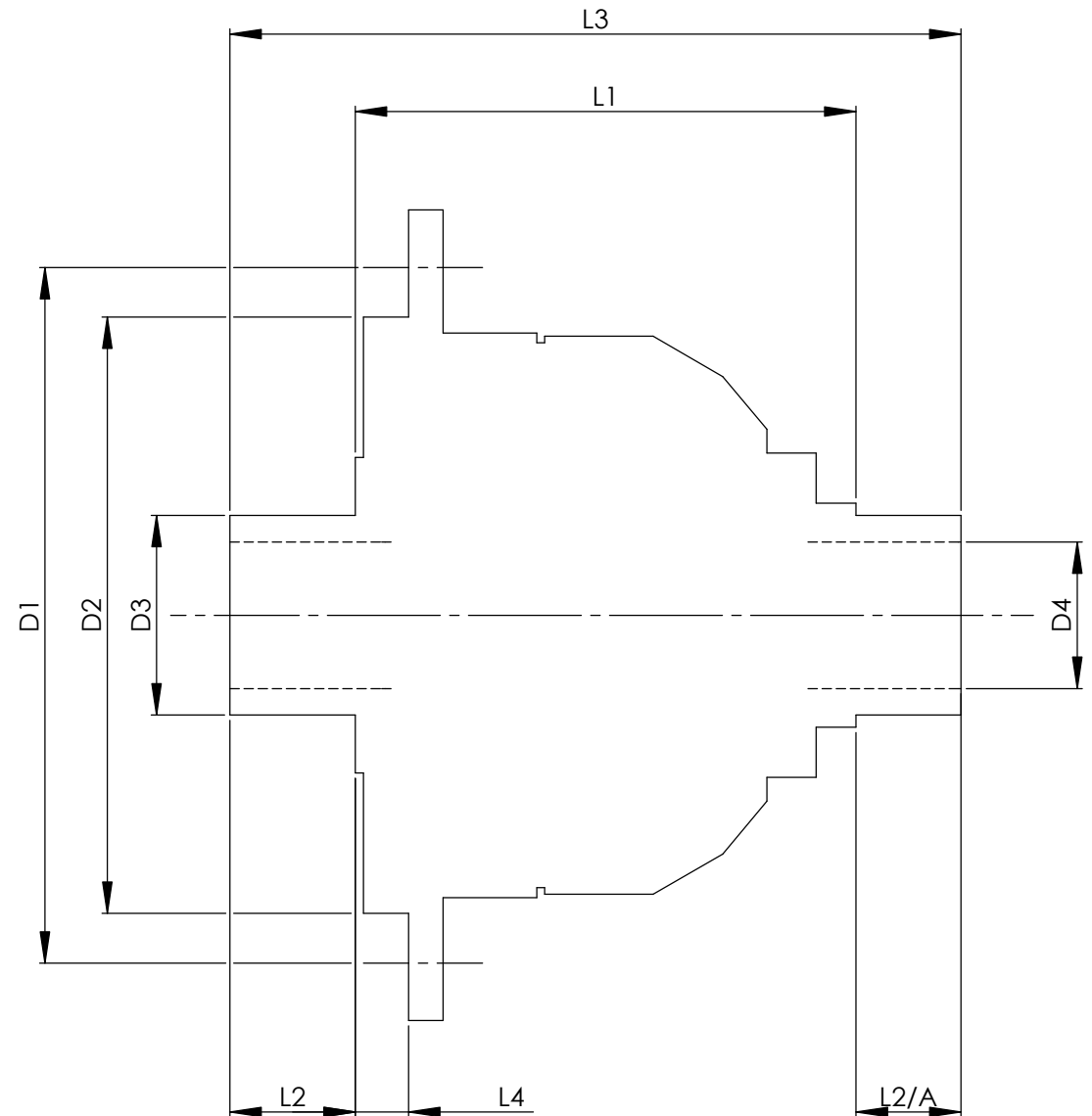


| | | INCH | MM |
|------------------------|------|-------------|----------|
| CROWN WHEEL BOLT PCD | D1 | 5.5118 | 140 |
| No. OF BOLTS | | 10 | 10 |
| THREAD / THRO' HOLE | | M10x1.5 | M10x1.5 |
| CROWN WHEEL SPIGOT DIA | D2 | 4.5678 | 116 |
| BEARING DIA | D3 | 1.6268 | 41.3 |
| BEARING DISTANCE | L1 | 3.655 | 92.8 |
| SPIGOT LENGTH | L2 | 0.740 | 18.8 |
| | L2/A | 0.745 | 18.9 |
| OVERALL LENGTH | L3 | 5.140 | 130.6 |
| BEARING/CROWN WHEEL | L4 | 0.045 | 1.1 |
| BORE | D4 | 1.001 | 25.4 |
| | | | |
| | | | |
| DRIVE SHAFT SPLINE:- | | | |
| No. OF TEETH | | 34 | |
| PITCH | | 32/64 DP | |
| TYPE | | FILLET ROOT | SIDE FIT |
| PRESSURE ANGLE | | 30 DEG | |
| | | | |



TITLE F.W.D. DIFF DATA SHEET.

SCALE 1:1 U.O.S. SHEET 1 OF 1

Drg. No. QDF17B

A3(4)border

Quaife Design & Development.

IF IN DOUBT, ASK.

THIS DRAWING OR DESIGN IS STRICTLY CONFIDENTIAL & THE COPYRIGHT THEREIN IS THE EXCLUSIVE PROPERTY OF R.T. QUAIFF ENGINEERING LTD. AND MAY NOT BE USED COPIED OR EXHIBITED WITHOUT THEIR WRITTEN PERMISSION.

| | |
|---|---------|
| FINISH. MACH. | GRIND@G |
| LIMITS. FRACT. ± 1/64" | |
| DEC. ± 0.005" | |
| MATERIAL. | |
| TREATMENT. | |
| ISSUE. 01 DATE. 20.5.05 | |
| DRAWN BY. M.L.M. | |
| Used In. Vauxhall F23 (Getrag 287) | |

SOLID WORKS