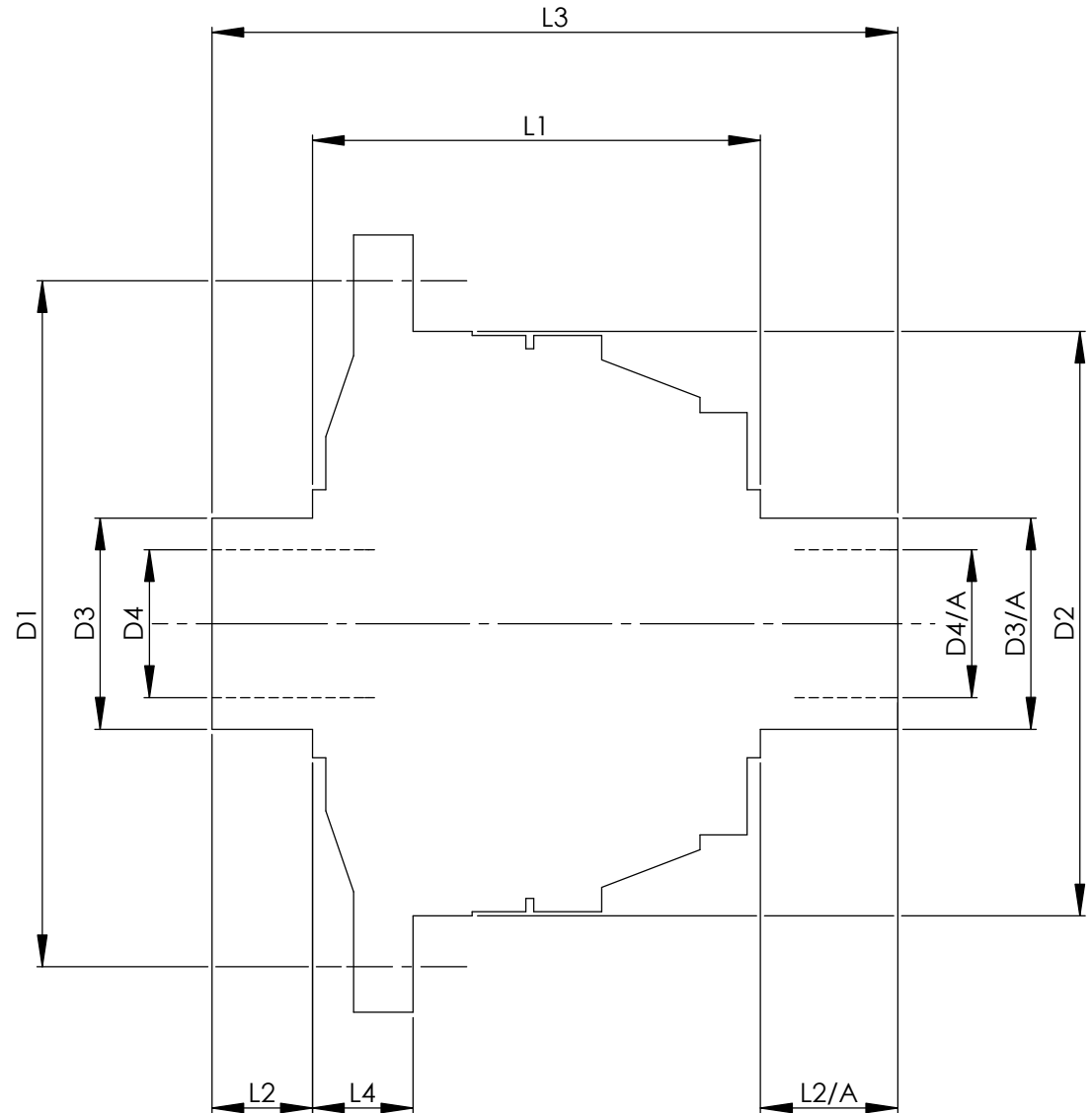


		INCH	MM
CROWN WHEEL BOLT PCD	D1	5.315	135
No. OF BOLTS		10	10
THREAD / THRO' HOLE		M10x1.25	M10x1.25
CROWN WHEEL SPIGOT DIA	D2	4.450	113.0
BEARING DIA	D3	1.4976	38.0
	D3/A	1.9702	50.0
BEARING DISTANCE	L1	3.675	93.3
SPIGOT LENGTH	L2	0.788	20.0
	L2/A	0.665	16.9
OVERALL LENGTH	L3	5.128	130.3
BEARING/CROWN WHEEL	L4	1.063	27.0
BORE	D4	1.074	27.3
	D4/A	1.388	35.3
DRIVE SHAFT SPLINE:-			
No. OF TEETH		34	
PITCH		32/64 DP	
TYPE		FILLET ROOT	SIDE FIT
PRESSURE ANGLE		30 DEG	



TITLE F.W.D. DIFF DATA SHEET.

SCALE 1:1 U.O.S. SHEET 1 OF 1

Drg. No. QDF19B

A3(4)border

Quaife Design & Development.

IF IN DOUBT, ASK.

THIS DRAWING OR DESIGN IS STRICTLY CONFIDENTIAL & THE COPYRIGHT THEREIN IS THE EXCLUSIVE PROPERTY OF R.T. QUAIFF ENGINEERING LTD. AND MAY NOT BE USED COPIED OR EXHIBITED WITHOUT THEIR WRITTEN PERMISSION.

FINISH. MACH, GRIND@G
 LIMITS. FRACT. ± 1/64".
 DEC. ± 0.005".
 MATERIAL.
 TREATMENT.
 ISSUE. 01 DATE. 20.5.05
 DRAWN BY. M.L.M.

Used In. Vauxhall F28 4x4 (front)

SOLID WORKS