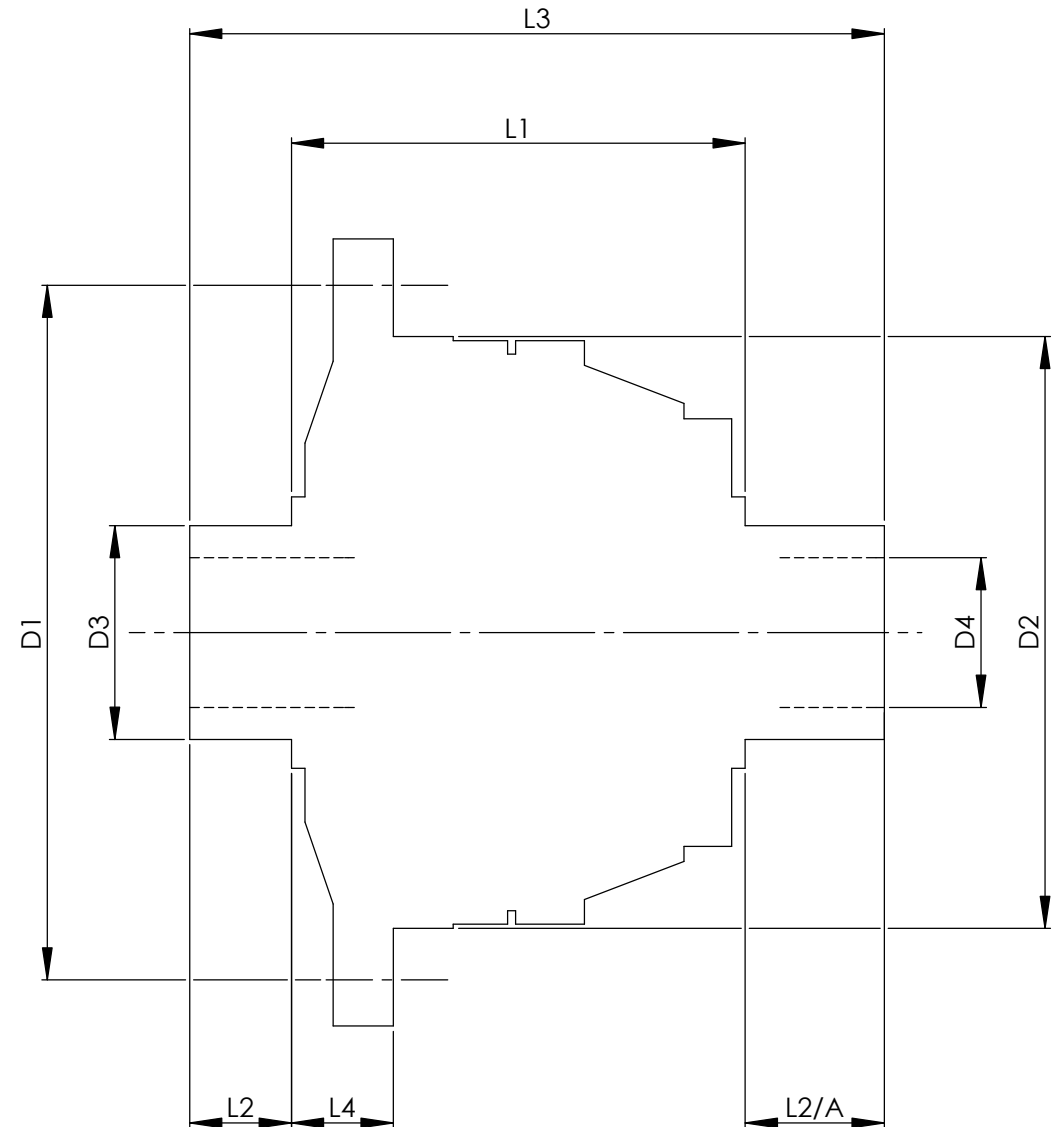


Drg No. QDF28K

REMOVE ALL BURRS AND SHARP EDGES.

THIRD ANGLE PROJECTION.

		INCH	MM
CROWN WHEEL BOLT PCD	D1	5.433	138.0
No. OF BOLTS		10	10
THREAD / THRO' HOLE		M11x1	M11x1
CROWN WHEEL SPIGOT DIA	D2	4.6057	117.0
BEARING DIA	D3	1.5748	40.0
BEARING DISTANCE	L1	3.700	94.0
SPIGOT LENGTH	L2	0.766	19.5
	L2/A	0.766	19.5
OVERALL LENGTH	L3	5.232	132.9
BEARING/CROWN WHEEL	L4	0.827	21.0
BORE	D4	1.1816	30.0
DRIVE SHAFT SPLINE:-			
No. OF TEETH		29	
PITCH		1 MOD.	
TYPE			
PRESSURE ANGLE		37.5 DEG	



TITLE F.W.D. DIFF DATA SHEET.

SCALE 1:1 U.O.S. SHEET 1 OF 1

Drg. No. QDF28K

Quaife Design & Development.

IF IN DOUBT, ASK.

THIS DRAWING OR DESIGN IS STRICTLY CONFIDENTIAL & THE COPYRIGHT THEREIN IS THE EXCLUSIVE PROPERTY OF R.T. QUAIFF ENGINEERING LTD. AND MAY NOT BE USED COPIED OR EXHIBITED WITHOUT THEIR WRITTEN PERMISSION.

FINISH. MACH, GRIND@G
 LIMITS. FRACT. ± 1/64".
 DEC. ± 0.005".
 MATERIAL.
 TREATMENT.
 ISSUE. 01 DATE. 19.5.05
 DRAWN BY. M.L.M.
Used In. LOTUS Elise (PG1)
 ROVER PG1