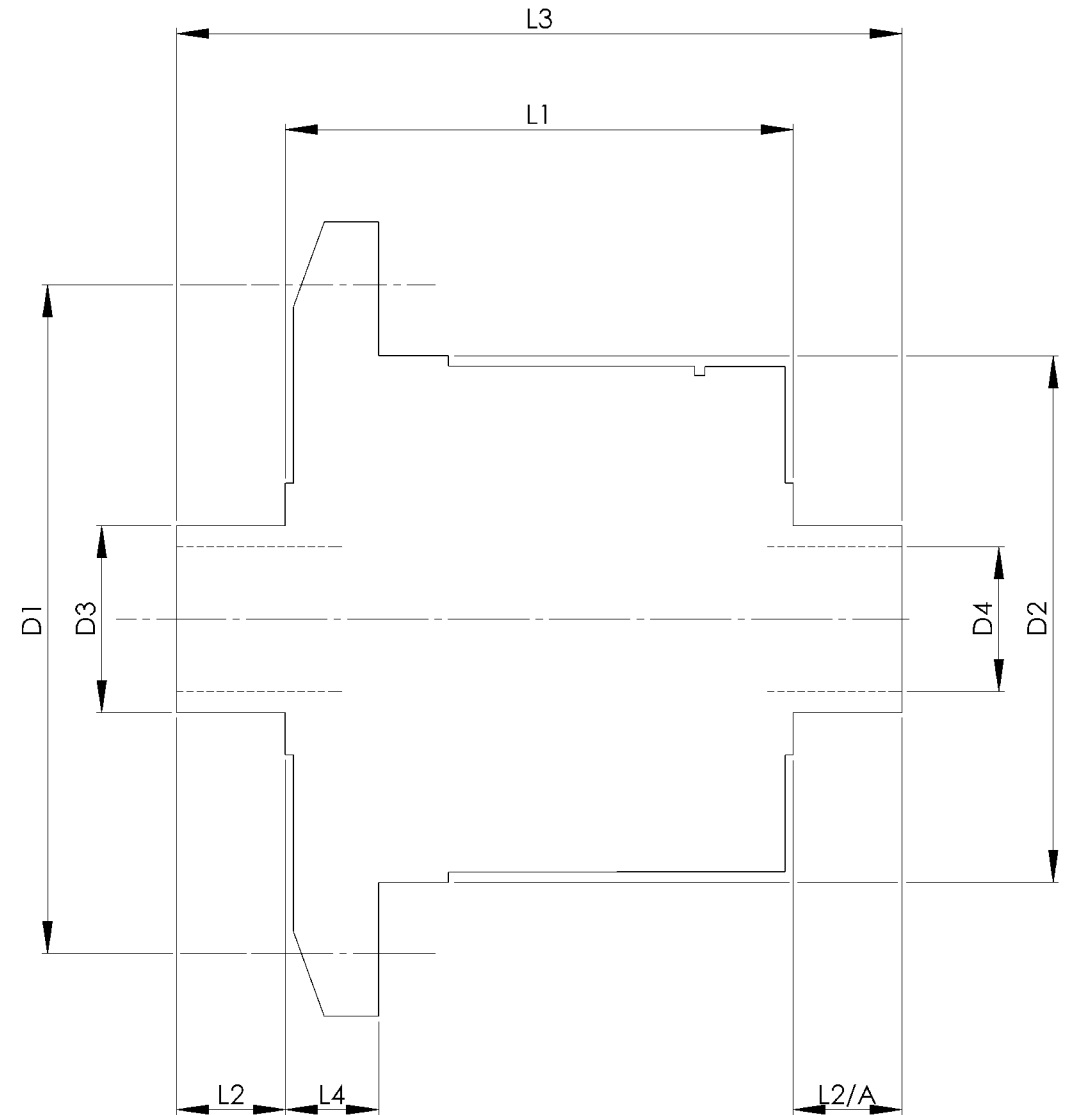


| | | INCH | MM |
|------------------------|------|-------------|----------|
| CROWN WHEEL BOLT PCD | D1 | 6.000 | 152.4 |
| No. OF BOLTS | | 10 | 10 |
| THREAD / THRO' HOLE | | 0.468 | 11.9 |
| CROWN WHEEL SPIGOT DIA | D2 | 5.000 | 127.0 |
| BEARING DIA | D3 | 1.7837 | 45.3 |
| BEARING DISTANCE | L1 | 6.014 | 152.7 |
| SPIGOT LENGTH | L2 | 0.825 | 21.0 |
| | L2/A | 0.785 | 20.0 |
| OVERALL LENGTH | L3 | 7.624 | 193.6 |
| BEARING/CROWN WHEEL | L4 | 1.000 | 25.4 |
| BORE | D4 | 1.351 | 34.3 |
| | | | |
| | | | |
| DRIVE SHAFT SPLINE:- | | | |
| No. OF TEETH | | 28 | |
| PITCH | | 24/48 DP | |
| TYPE | | FILLET ROOT | SIDE FIT |
| PRESSURE ANGLE | | 45 DEG | |
| | | | |



TITLE R.W.D. DIFF DATA SHEET.

SCALE 1:1 U.O.S. SHEET 1 OF 1

Drg. No. QDF29Z

Quaife Design & Development.

IF IN DOUBT, ASK.

THIS DRAWING OR DESIGN IS STRICTLY CONFIDENTIAL & THE COPYRIGHT THEREIN IS THE EXCLUSIVE PROPERTY OF RUTLAND TECHNOLOGIES LTD. IT IS NOT TO BE REPRODUCED OR TRANSMITTED IN ANY FORM OR BY ANY MEANS WITHOUT THE WRITTEN PERMISSION OF RUTLAND TECHNOLOGIES LTD.

FINISH. MACH. GRIND@G
 LIMITS. FRACT. ± 1/64".
 DEC. ± 0.005".
 MATERIAL.
 TREATMENT.
 ISSUE. 01 DATE. 18.5.05
 DRAWN BY. M.L.M.
Used In. FORD MUSTANG 8.8"