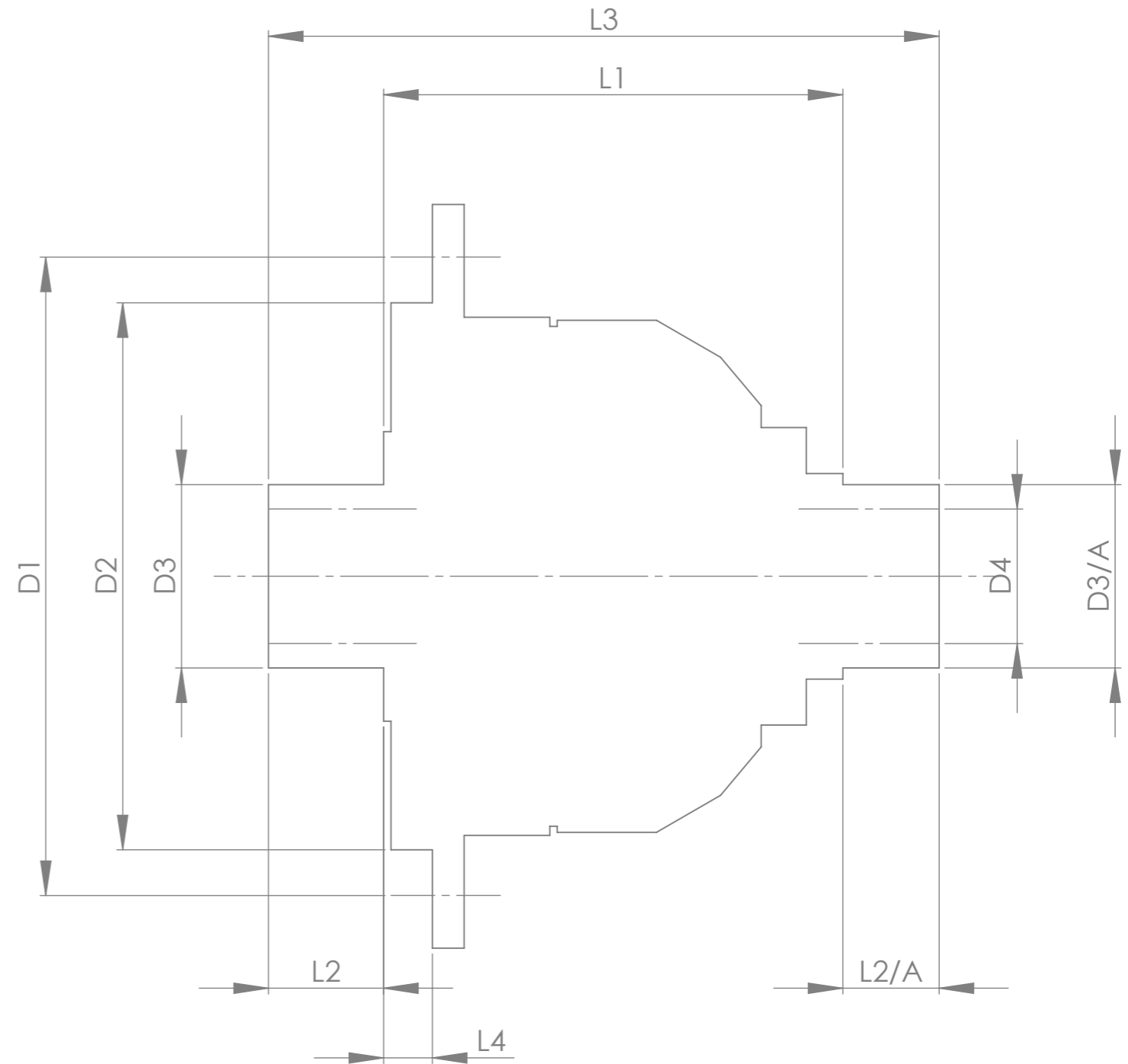


		INCH	MM
CROWN WHEEL BOLT PCD	D1	5.906	150
No. OF BOLTS		12	
THREAD / THRO' HOLE		M12x1.0	
CROWN WHEEL SPIGOT DIA	D2	4.882	124.0
FLANGE END BEARING DIA	D3	2.166	55.0
SMALL END BEARING DIA	D3/A	1.969	50.0
BEARING DISTANCE	L1	4.652	118.2
SPIGOT LENGTH	L2	0.763	19.4
	L2/A	0.890	22.6
OVERALL LENGTH	L3	6.305	160.2
BEARING/CROWN WHEEL	L4	0.505	12.8
BORE	D4	1.379	35.0
DRIVE SHAFT SPLINE:-			
No. OF TEETH		24	
PITCH		20/40 D.P.	
TYPE		FLAT ROOT SIDE FIT	
PRESSURE ANGLE		30°	



TITLE F.W.D. DIFF DATA SHEET.

SCALE 1:1 U.O.S. SHEET 1 OF 1

Drg. No. QDF30E

Quaife Design & Development.

IF IN DOUBT, ASK.

THIS DRAWING OR DESIGN IS STRICTLY CONFIDENTIAL & THE COPYRIGHT THEREIN THE EXCLUSIVE PROPERTY OF RT QUAIFFE ENGINEERING LTD. AND MAY NOT BE USED COPIED OR EXHIBITED WITHOUT THEIR WRITTEN PERMISSION.

FINISH. MACH, GRIND@G
 LIMITS. FRACT. ± 1/64".
 DEC. ± 0.005".
 MATERIAL.
 TREATMENT.
 ISSUE. 01 DATE. 02/01/2018
 DRAWN BY. J.B.P.

Used In. LOTUS EVORA AUTO