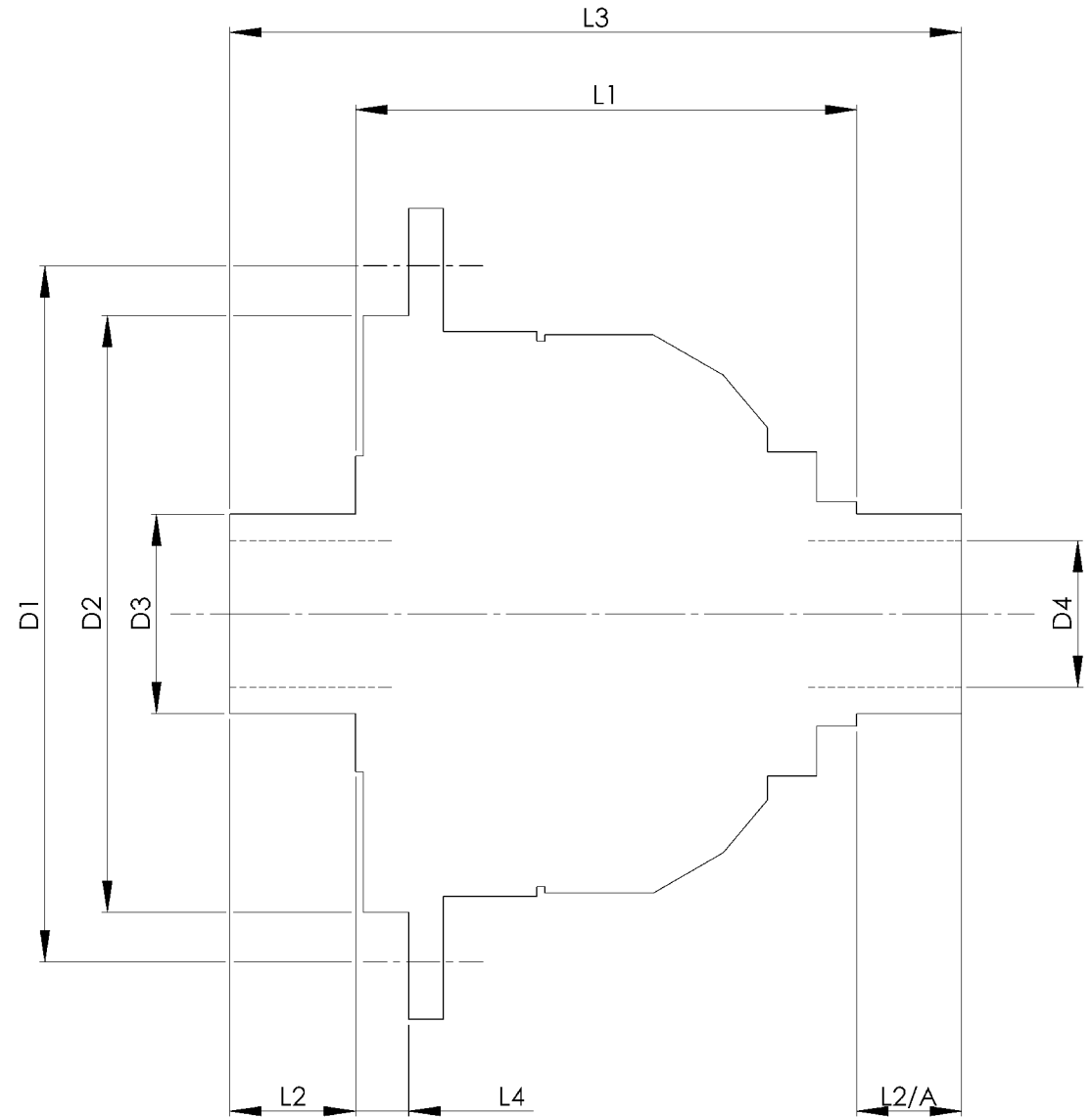


		INCH	MM
CROWN WHEEL BOLT PCD	D1	5.354	136
No. OF BOLTS		8	8
THREAD / THRO' HOLE		M10x1	M10x1
CROWN WHEEL SPIGOT DIA	D2	4.5672	116.0
BEARING DIA	D3	1.4968	38.0
BEARING DISTANCE	L1	3.938	100.0
SPIGOT LENGTH	L2	0.764	19.4
	L2/A	0.986	25.0
OVERALL LENGTH	L3	5.688	144.5
BEARING/CROWN WHEEL	L4	1.072	27.2
BORE	D4	1.0523	26.7
DRIVE SHAFT SPLINE:-			
No. OF TEETH		24	
PITCH		24/48 DP	
TYPE		FILLET ROOT	SIDE FIT
PRESSURE ANGLE		45 DEG	



TITLE F.W.D. DIFF DATA SHEET.
SCALE 1:1 U.O.S. SHEET 1 OF 1
Drg. No. QDF3H

Quaife Design & Development.

IF IN DOUBT, ASK.

THIS DRAWING OR DESIGN IS STRICTLY CONFIDENTIAL & THE COPYRIGHT THEREIN IS THE EXCLUSIVE PROPERTY OF PEUGEOT CITREON. IT IS TO BE KEPT IN STRICTLY CONFIDENTIAL AND MAY NOT BE USED, COPIED OR REPRODUCED WITHOUT THE WRITTEN PERMISSION.

FINISH. MACH.	GRIND@G
LIMITS. FRACT. ± 1/64"	
DEC. ± 0.005"	
MATERIAL.	
TREATMENT.	
ISSUE. 01 DATE. 17.5.05	
DRAWN BY. M.L.M.	

Used In. PEUGEOT 205/306/309Gti, 405 Mi 16 (BE3 G/BOX), CITREON ZX (BE3 G/BOX)