

Drg No. QDF3W

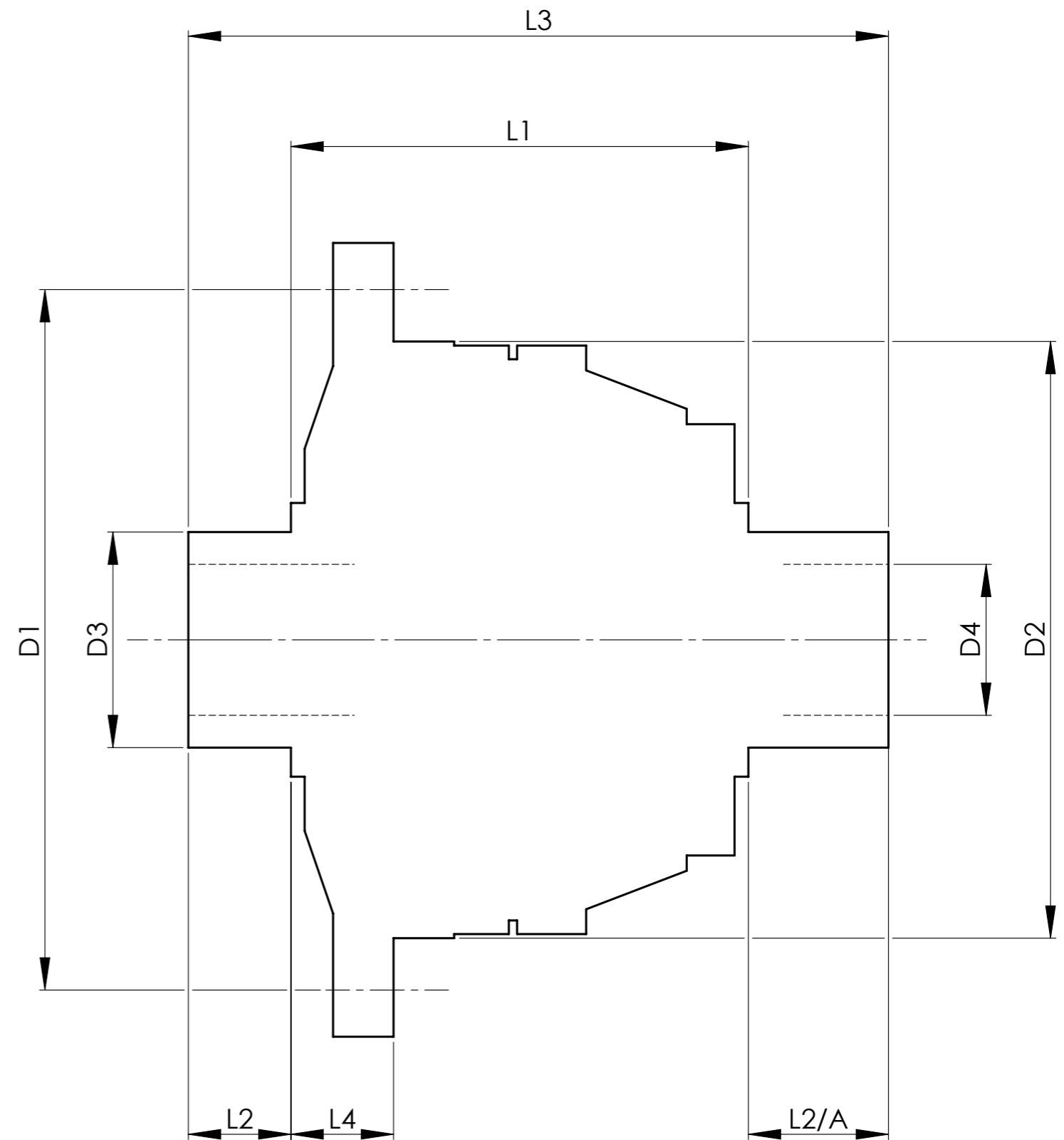
REMOVE ALL BURRS AND SHARP EDGES.

THIRD ANGLE PROJECTION.

| | | INCH | MM |
|------------------------|------|-------|-------|
| CROWN WHEEL BOLT PCD | D1 | 6.000 | 152.4 |
| No. OF BOLTS | | 10 | 10 |
| THREAD / THRO' HOLE | | 0.492 | 12.5 |
| CROWN WHEEL SPIGOT DIA | D2 | 5.000 | 127.0 |
| BEARING DIA | D3 | 1.786 | 45.4 |
| BEARING DISTANCE | L1 | 6.007 | 152.6 |
| SPIGOT LENGTH | L2 | 0.820 | 20.8 |
| | L2/A | 0.820 | 20.8 |
| OVERALL LENGTH | L3 | 7.647 | 194.2 |
| BEARING/CROWN WHEEL | L4 | 1.010 | 25.7 |
| BORE | D4 | 1.264 | 32.1 |

DRIVE SHAFT SPLINE:-

| | |
|----------------|----------------------|
| No. OF TEETH | 28 |
| PITCH | 24/48 D.P. |
| TYPE | FILLET ROOT SIDE FIT |
| PRESSURE ANGLE | 45° |



| |
|-------------------------------|
| TITLE F.W.D. DIFF DATA SHEET. |
| SCALE 1:1 U.O.S. SHEET 1 OF 1 |
| Drg. No. QDF3W |

Quaife Design & Development.

IF IN DOUBT, ASK.

THIS DRAWING OR DESIGN IS STRICTLY CONFIDENTIAL & THE COPYRIGHT THEREIN IS THE EXCLUSIVE PROPERTY OF RT QUAIFFE ENGINEERING LTD. AND MAY NOT BE USED COPIED OR EXHIBITED WITHOUT THEIR WRITTEN PERMISSION.

| | |
|-------------------------|---------|
| FINISH. MACH, | GRIND@G |
| LIMITS. FRACT. ± 1/64". | |
| DEC. ± 0.005". | |
| MATERIAL. | |
| TREATMENT. | |
| ISSUE. 01 DATE. 14.8.08 | |
| DRAWN BY. J.P.D. | |

Used In. JAGUAR XKR