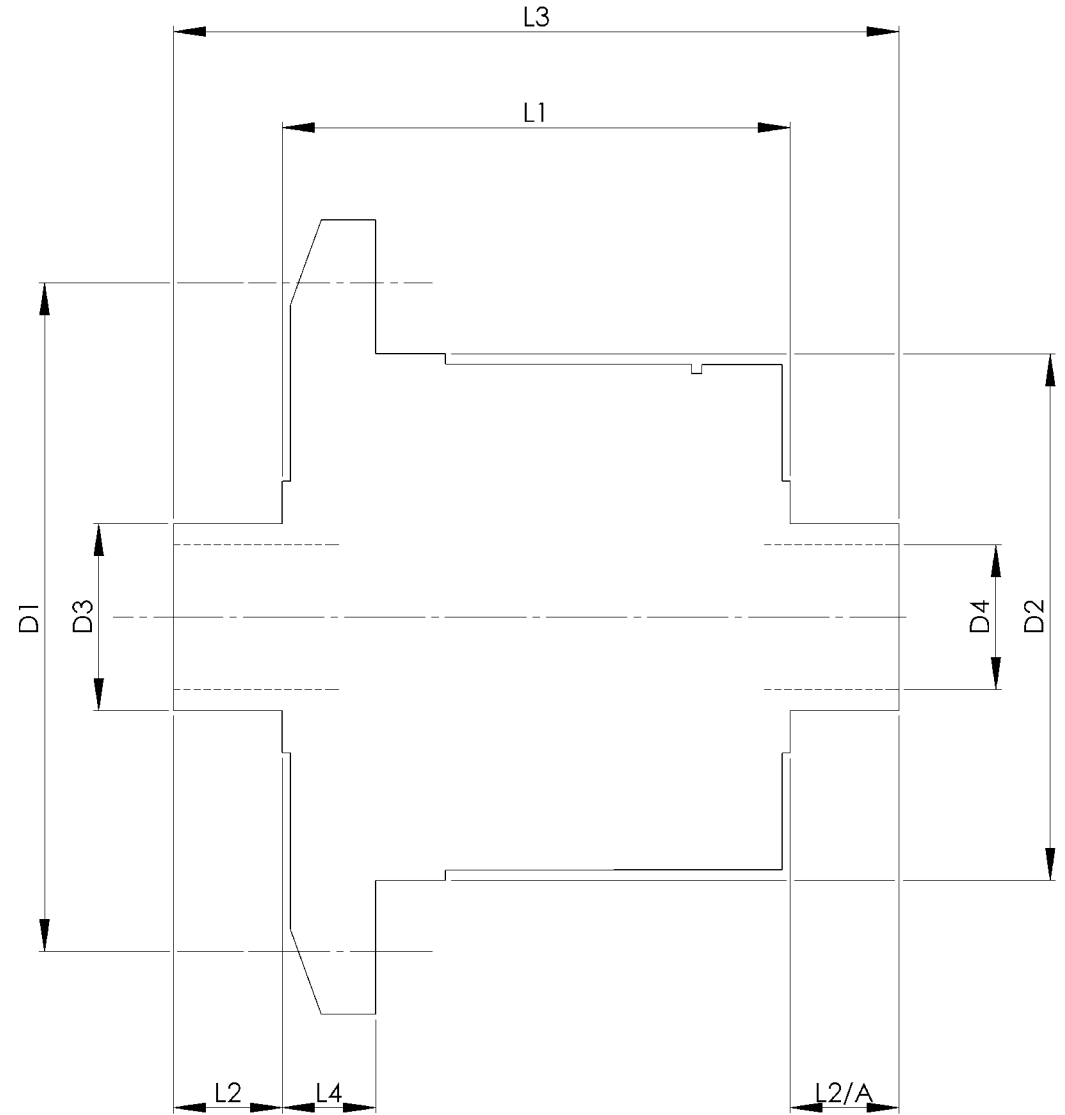


		INCH	MM
CROWN WHEEL BOLT PCD	D1	5.438	138.1
No. OF BOLTS		8	8
THREAD / THRO' HOLE		0.437	11.1
CROWN WHEEL SPIGOT DIA	D2	4.2515	108.0
BEARING DIA	D3	1.8141	46.1
BEARING DISTANCE	L1	4.125	104.8
SPIGOT LENGTH	L2	0.750	19.0
	L2/A	0.750	19.0
OVERALL LENGTH	L3	5.625	142.9
BEARING/CROWN WHEEL	L4	0.500	12.7
BORE	D4	1.420	36.1
DRIVE SHAFT SPLINE:-			
No. OF TEETH		18	6
PITCH		16/32 DP	STRAIGHT
TYPE		FLAT ROOT	
PRESSURE ANGLE		30 DEG	



TITLE R.W.D. DIFF DATA SHEET.
SCALE 1:1 U.O.S. SHEET 1 OF 1
Drg. No. QDF8S

Quaife Design & Development.

IF IN DOUBT, ASK.

THIS DRAWING OR DESIGN IS STRICTLY CONFIDENTIAL & THE COPYRIGHT THEREIN IS THE EXCLUSIVE PROPERTY OF QUAIFE DESIGN & DEVELOPMENT LTD. AND MAY NOT BE USED, COPIED OR REPRODUCED WITHOUT THE WRITTEN PERMISSION.

FINISH. MACH.	GRIND@G
LIMITS. FRACT. ± 1/64"	
DEC. ± 0.005"	
MATERIAL.	
TREATMENT.	
ISSUE. 01 DATE. 24.5.05	
DRAWN BY. M.L.M.	

Used In. NST GEARBOX DIFF