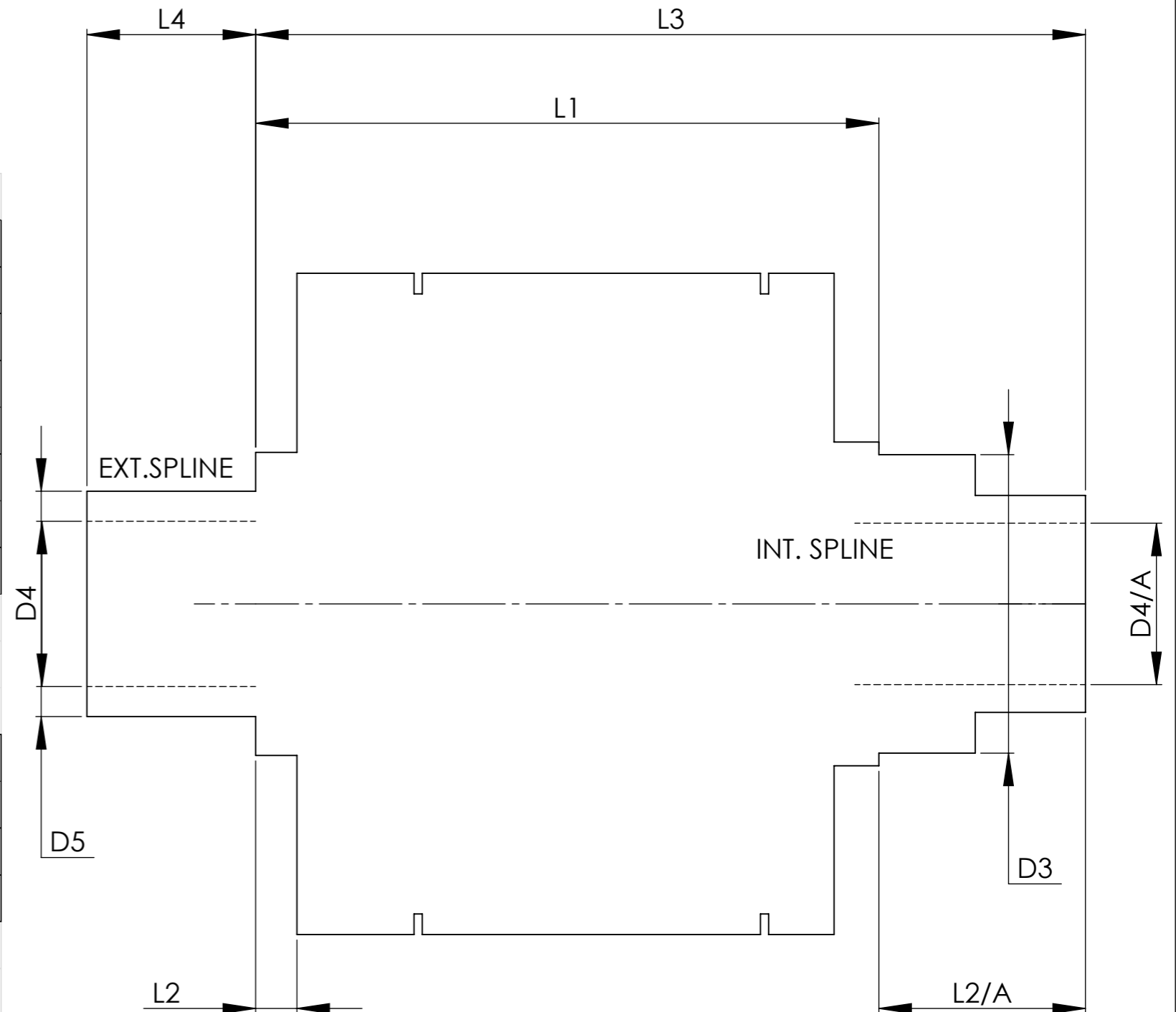


		INCH	MM
BEARING DISTANCE	L1	4.057	103.05
SPIGOT LENGTH	L2	0.102	2.59
	L2/A	2.138	54.3
OVERALL LENGTH	L3	7.791	197.9
BEARING DIA	D3	2.2431	57.0
BORE	D4	1.1227	28.5
	D4/A	1.497	38.02
SHAFT DIA	D5	1.525	29.27
DRIVE SHAFT SPLINE:-			
		EXTERNAL	INTERNAL
No. OF TEETH		37	38
PITCH		1 MOD	1 MOD
TYPE		FLAT ROOT SIDE FIT	FLAT ROOT SIDE FIT
PRESSURE ANGLE		30°	30°



TITLE CENTRE. DIFF DATA SHEET.
SCALE 1:1 U.O.S. SHEET 1 OF 1
Drg. No. QDH17B

Quaife Design & Development.

IF IN DOUBT, ASK.

THIS DRAWING OR DESIGN IS STRICTLY CONFIDENTIAL & THE COPYRIGHT THEREIN THE EXCLUSIVE PROPERTY OF RT QUAIFFE ENGINEERING LTD. AND MAY NOT BE USED COPIED OR EXHIBITED WITHOUT THEIR WRITTEN PERMISSION.

FINISH. MACH,	GRIND@G
LIMITS. FRACT. ± 1/64".	
DEC. ± 0.005".	
MATERIAL.	
TREATMENT.	
ISSUE. 01 DATE. 27.9.11	
DRAWN BY. H.R.	
Used In. MITSUBISHI EVO 10	
AWD FRONT DIFF	