

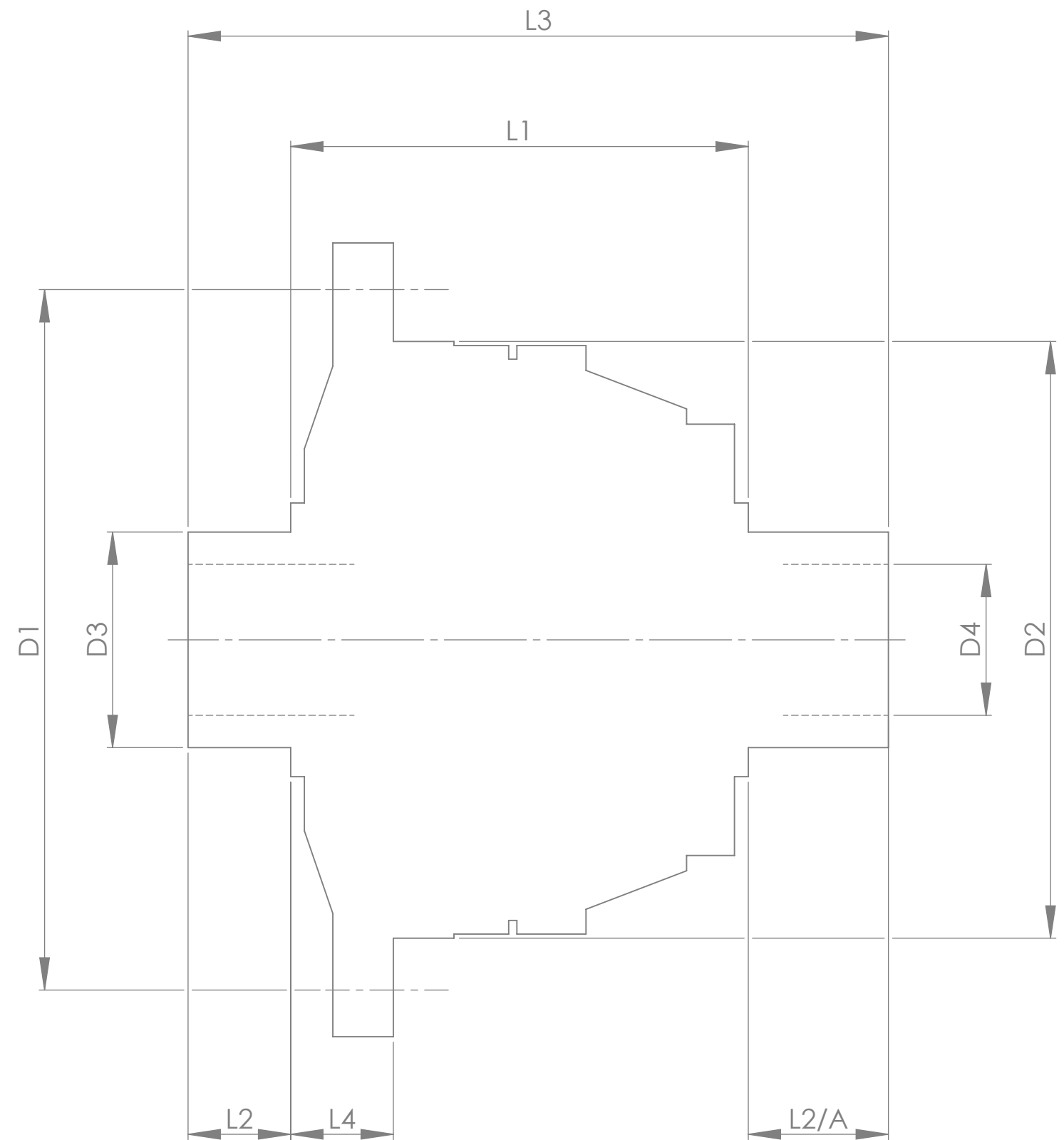
CROWN WHEEL BOLT PCD
 No. OF BOLTS
 THREAD / THRO' HOLE
 CROWN WHEEL SPIGOT DIA
 BEARING DIA
 BEARING DISTANCE
 SPIGOT LENGTH
 OVERALL LENGTH
 BEARING/CROWN WHEEL
 BORE

| | | INCH | MM |
|------|--|----------|----------|
| D1 | | 5.512 | 140.0 |
| | | 12 | 12 |
| | | M10x1.25 | M10x1.25 |
| D2 | | 4.568 | 116.0 |
| D3 | | 1.773 | 45.0 |
| L1 | | 3.626 | 92.1 |
| L2 | | 0.787 | 20.0 |
| L2/A | | 0.789 | 20.0 |
| L3 | | 5.202 | 132.1 |
| L4 | | 1.285 | 32.6 |
| D4 | | 1.102 | 28.0 |

DRIVE SHAFT SPLINE:-

No. OF TEETH
 PITCH
 TYPE
 PRESSURE ANGLE

| |
|----------------------|
| 25 |
| 24/48 D.P. |
| FILLET ROOT SIDE FIT |
| 45° |



TITLE F.W.D. DIFF DATA SHEET.

SCALE 1:1 U.O.S. SHEET 1 OF 1

Drg. No. QDH7E

IF IN DOUBT, ASK.

Quaife Design & Development.

THIS DRAWING OR DESIGN IS STRICTLY CONFIDENTIAL & THE COPYRIGHT THEREIN IS THE EXCLUSIVE PROPERTY OF RT QUAIFFE ENGINEERING LTD. AND MAY NOT BE USED COPIED OR EXHIBITED WITHOUT THEIR WRITTEN PERMISSION.

FINISH. MACH, GRIND@G
 LIMITS. FRACT. ± 1/64".
 DEC. ± 0.005".

MATERIAL.
 TREATMENT.
 ISSUE. 01 DATE. 12.12.12
 DRAWN BY. J.P.D.

Used In. ALFA ROMEO MITO