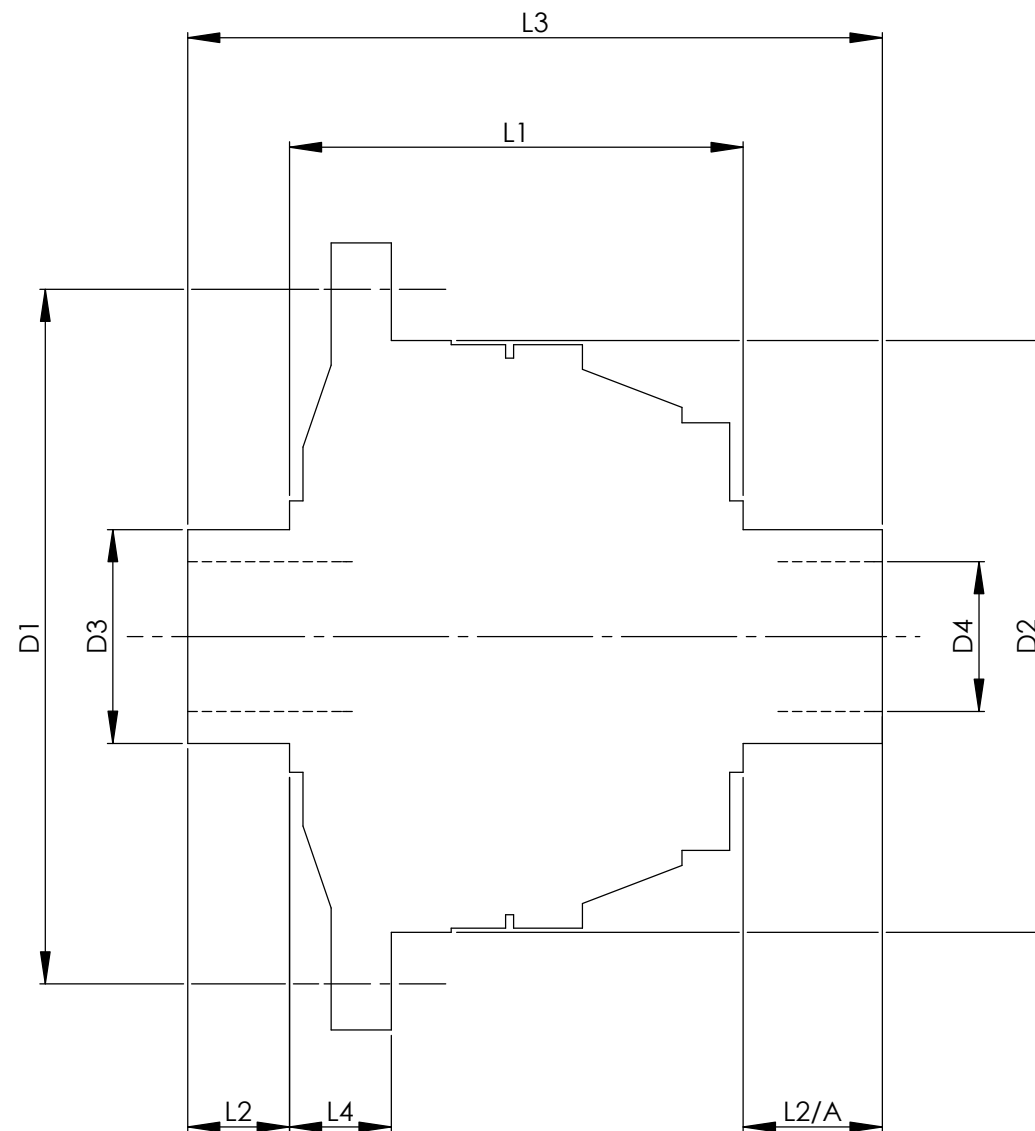


| | | INCH | MM |
|------------------------|------|-------------|----------|
| CROWN WHEEL BOLT PCD | D1 | 5.236 | 133 |
| No. OF BOLTS | | 8 | 8 |
| THREAD / THRO' HOLE | | 0.452 | 11.5 |
| CROWN WHEEL SPIGOT DIA | D2 | 4.488 | 114.0 |
| BEARING DIA | D3 | 1.6154 | 41.0 |
| BEARING DISTANCE | L1 | 4.105 | 104.3 |
| SPIGOT LENGTH | L2 | 0.740 | 18.8 |
| | L2/A | 0.740 | 18.8 |
| OVERALL LENGTH | L3 | 5.585 | 141.9 |
| BEARING/CROWN WHEEL | L4 | 0.827 | 21.0 |
| BORE | D4 | 1.126 | 28.6 |
| | | | |
| | | | |
| DRIVE SHAFT SPLINE:- | | | |
| No. OF TEETH | | 33 | |
| PITCH | | 32/64 DP | |
| TYPE | | FILLET ROOT | SIDE FIT |
| PRESSURE ANGLE | | 45 DEG | |



| |
|-------------------------------|
| TITLE F.W.D. DIFF DATA SHEET. |
| SCALE 1:1 U.O.S. SHEET 1 OF 1 |
| Drg. No. QDF10R |

Quaife Design & Development.

IF IN DOUBT, ASK.

THIS DRAWING OR DESIGN IS STRICTLY CONFIDENTIAL & THE COPYRIGHT THEREIN IS THE EXCLUSIVE PROPERTY OF R.T. QUAIFF ENGINEERING LTD. AND MAY NOT BE USED COPIED OR EXHIBITED WITHOUT THEIR WRITTEN PERMISSION.

| | |
|-------------------------------------|---------|
| FINISH. MACH. | GRIND@G |
| LIMITS. FRACT. ± 1/64" | |
| DEC. ± 0.005" | |
| MATERIAL. | |
| TREATMENT. | |
| ISSUE. 01 DATE. 16.5.05 | |
| DRAWN BY. M.L.M. | |
| Used In. VW GOLF MK3/4 (02J) | |
| WITH BOLT IN FLANGES. | |