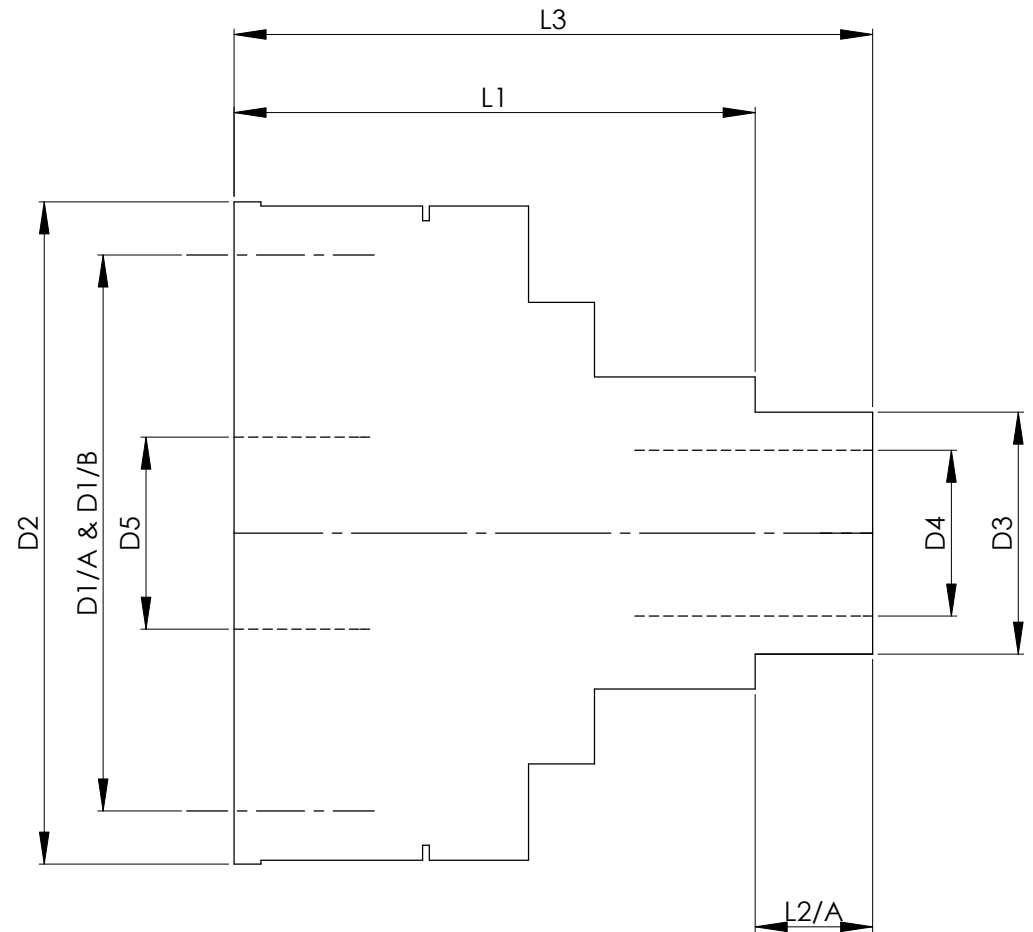


		INCH	MM
CROWN WHEEL BOLT PCD 1	D1/A	4.285	108.8
CROWN WHEEL BOLT PCD 2	D1/B	4.010	101.9
No. OF BOLTS		8	8
THREAD / THRO' HOLE		M12x1.25	M12x1.25
CROWN WHEEL SPIGOT DIA	D2	4.9599	126.0
BEARING DIA	D3	1.5753	40.0
BEARING DISTANCE	L1	4.0395	102.6
SPIGOT LENGTH	L2	0	0
	L2/A	0.520	13.2
OVERALL LENGTH	L3	4.5596	115.8
BEARING/CROWN WHEEL BORE	L4	0	0
SUNWHEEL SPIGOT DIA	D4	1.2241	31.1
	D5	1.573	39.9

DRIVE SHAFT SPLINE:-

No. OF TEETH	12	
PITCH	TBE	
TYPE	TBE	TBE
PRESSURE ANGLE	TBE	



TITLE F.W.D. DIFF DATA SHEET.
SCALE 1:1 U.O.S. SHEET 1 OF 1
<b>Drg. No.</b> QDF13H

**Quaife Design & Development.**

IF IN DOUBT, ASK.

THIS DRAWING OR DESIGN IS STRICTLY CONFIDENTIAL & THE COPYRIGHT THEREIN IS THE EXCLUSIVE PROPERTY OF R.T. QUAIFF ENGINEERING LTD. AND MAY NOT BE USED COPIED OR EXHIBITED WITHOUT THEIR WRITTEN PERMISSION.

FINISH. MACH,	GRIND@G
LIMITS. FRACT. ± 1/64"	
DEC. ± 0.005"	
MATERIAL.	
TREATMENT.	
ISSUE. 01 DATE. 16.5.07	
DRAWN BY. H.R.	
<b>Used In.</b> CITREON SM	