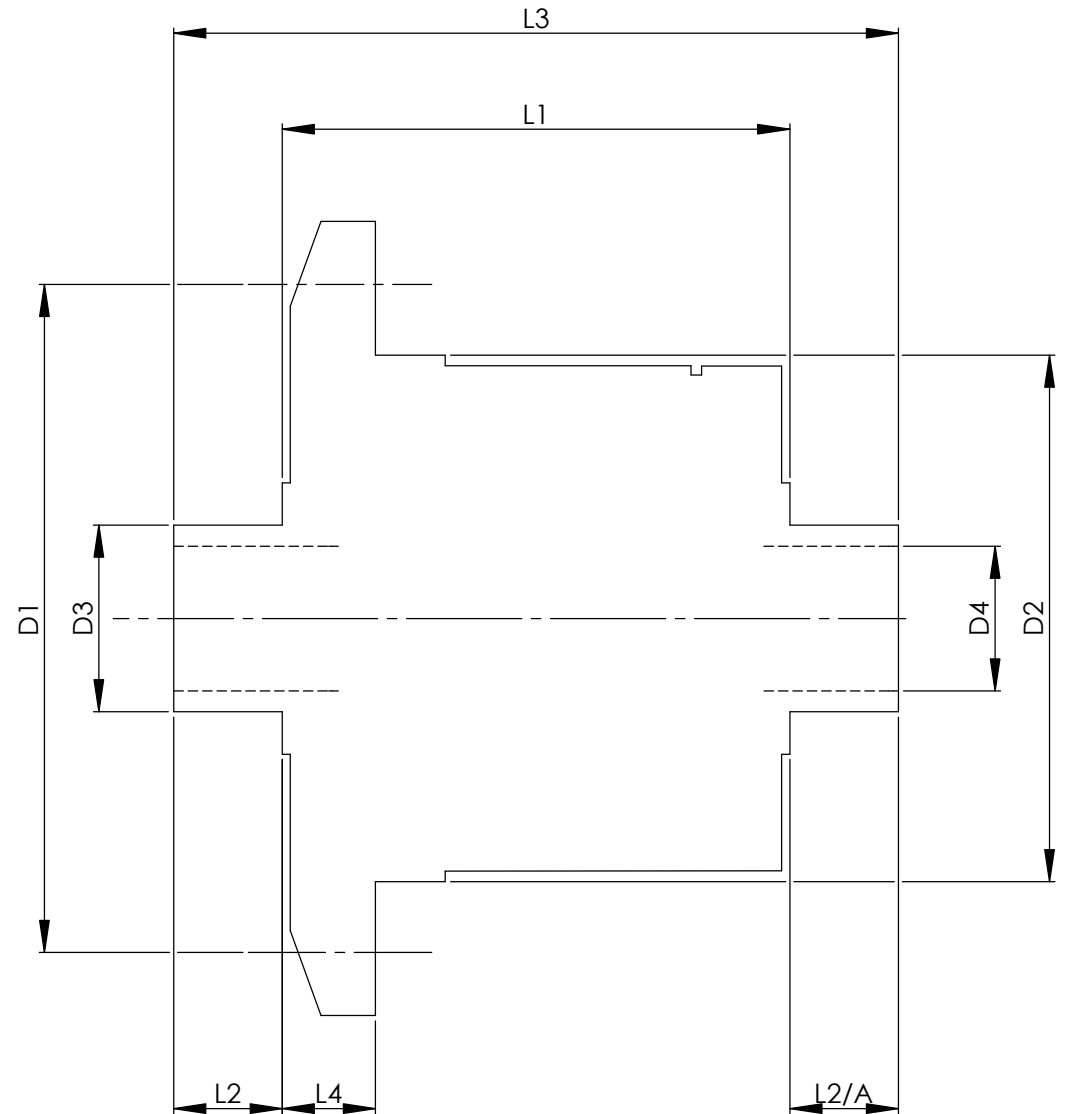


		INCH	MM
CROWN WHEEL BOLT PCD	D1	4.812	122.2
No. OF BOLTS		8	8
THREAD / THRO' HOLE		0.375	9.5
CROWN WHEEL SPIGOT DIA	D2	4.2485	107.9
BEARING DIA	D3	1.5752	40.0
BEARING DISTANCE	L1	4.490	114.0
SPIGOT LENGTH	L2	0.710	18.0
	L2/A	0.800	20.3
OVERALL LENGTH	L3	6.000	152.4
BEARING/CROWN WHEEL	L4	0.735	18.7
BORE	D4	1.126	28.6
DRIVE SHAFT SPLINE:-			
No. OF TEETH		25	
PITCH		24/48 DP	
TYPE		FLAT ROOT	SIDE FIT
PRESSURE ANGLE		30 DEG	



TITLE R.W.D. DIFF DATA SHEET.
SCALE 1:1 U.O.S. SHEET 1 OF 1
Drg. No. QDF15K

Quaife Design & Development.

IF IN DOUBT, ASK.

THIS DRAWING OR DESIGN IS STRICTLY CONFIDENTIAL & THE COPYRIGHT THEREIN IS THE EXCLUSIVE PROPERTY OF R.T. QUAIFF ENGINEERING LTD. AND MAY NOT BE USED COPIED OR EXHIBITED WITHOUT THEIR WRITTEN PERMISSION.

FINISH. MACH.	GRIND@G
LIMITS. FRACT. ± 1/64"	
DEC. ± 0.005"	
MATERIAL.	
TREATMENT.	
ISSUE. 01 DATE. 19.5.05	
DRAWN BY. M.L.M.	

Used In. MGA / MGB (Banjo Axle)