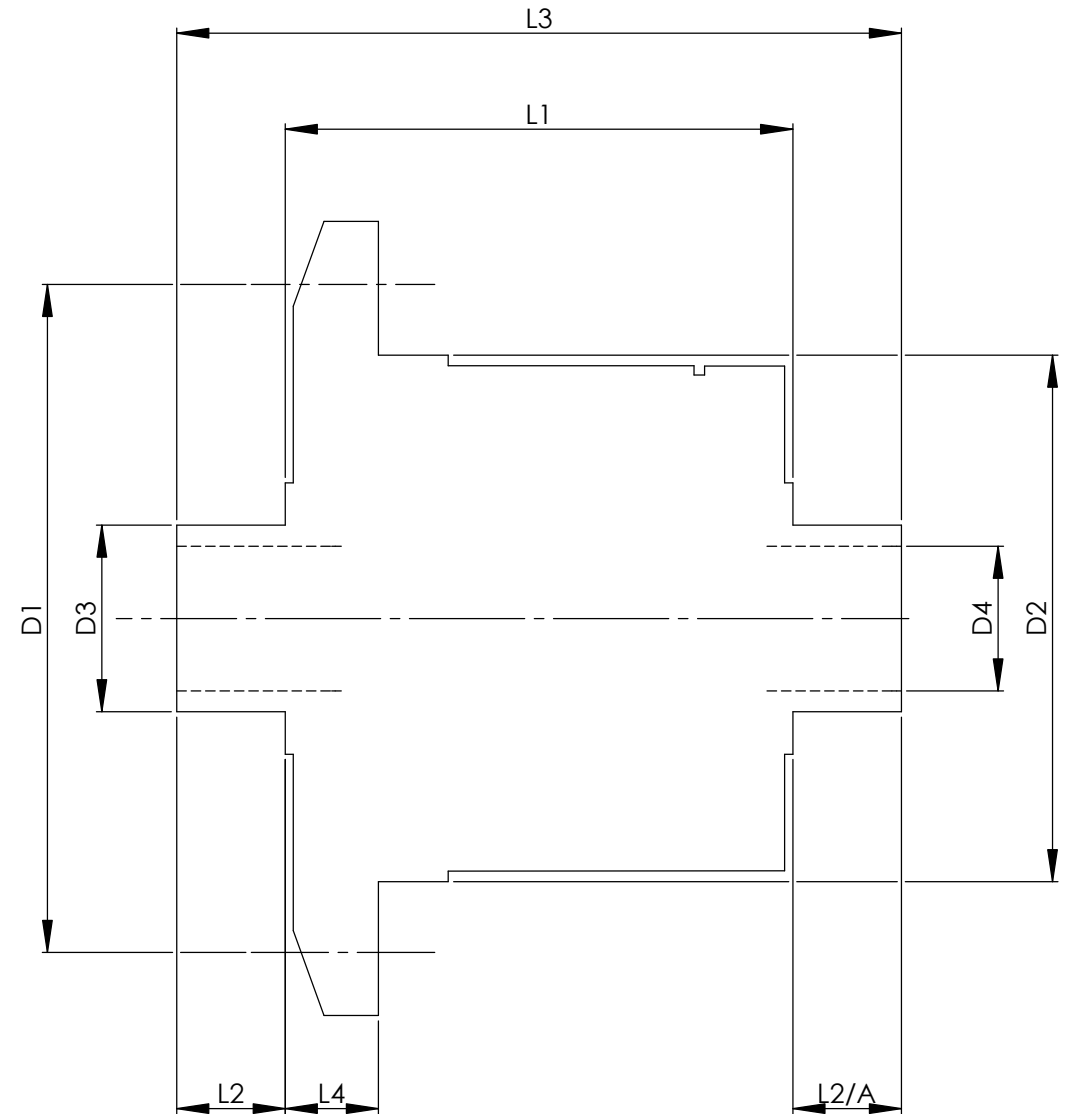


		INCH	MM
CROWN WHEEL BOLT PCD	D1	5.250	133.4
No. OF BOLTS		8	8
THREAD / THRO' HOLE		0.500	12.70
CROWN WHEEL SPIGOT DIA	D2	4.3735	111.00
BEARING DIA	D3	1.5018	38.10
BEARING DISTANCE	L1	5.115	130.00
SPIGOT LENGTH	L2	0.715	18.20
	L2/A	0.715	18.20
OVERALL LENGTH	L3	6.545	166.20
BEARING/CROWN WHEEL	L4	0.995	25.30
BORE	D4	1.068	27.10
DRIVE SHAFT SPLINE:-			
No. OF TEETH		24	
PITCH		24/48 DP	
TYPE		FILLET ROOT	SIDE FIT
PRESSURE ANGLE		45 DEG	



TITLE R.W.D. DIFF DATA SHEET.

SCALE 1:1 U.O.S. SHEET 1 OF 1

Drg. No. QDF16K

Quaife Design & Development.

IF IN DOUBT, ASK.

THIS DRAWING OR DESIGN IS STRICTLY CONFIDENTIAL & THE COPYRIGHT THEREIN IS THE EXCLUSIVE PROPERTY OF R.T. QUAIFF ENGINEERING LTD. AND MAY NOT BE USED COPIED OR EXHIBITED WITHOUT THEIR WRITTEN PERMISSION.

FINISH. MACH. GRIND@G
 LIMITS. FRACT. ± 1/64".
 DEC. ± 0.005".
 MATERIAL.
 TREATMENT.
 ISSUE. 01 DATE. 20.5.05
 DRAWN BY. M.L.M.

Used In. ROVER SDI