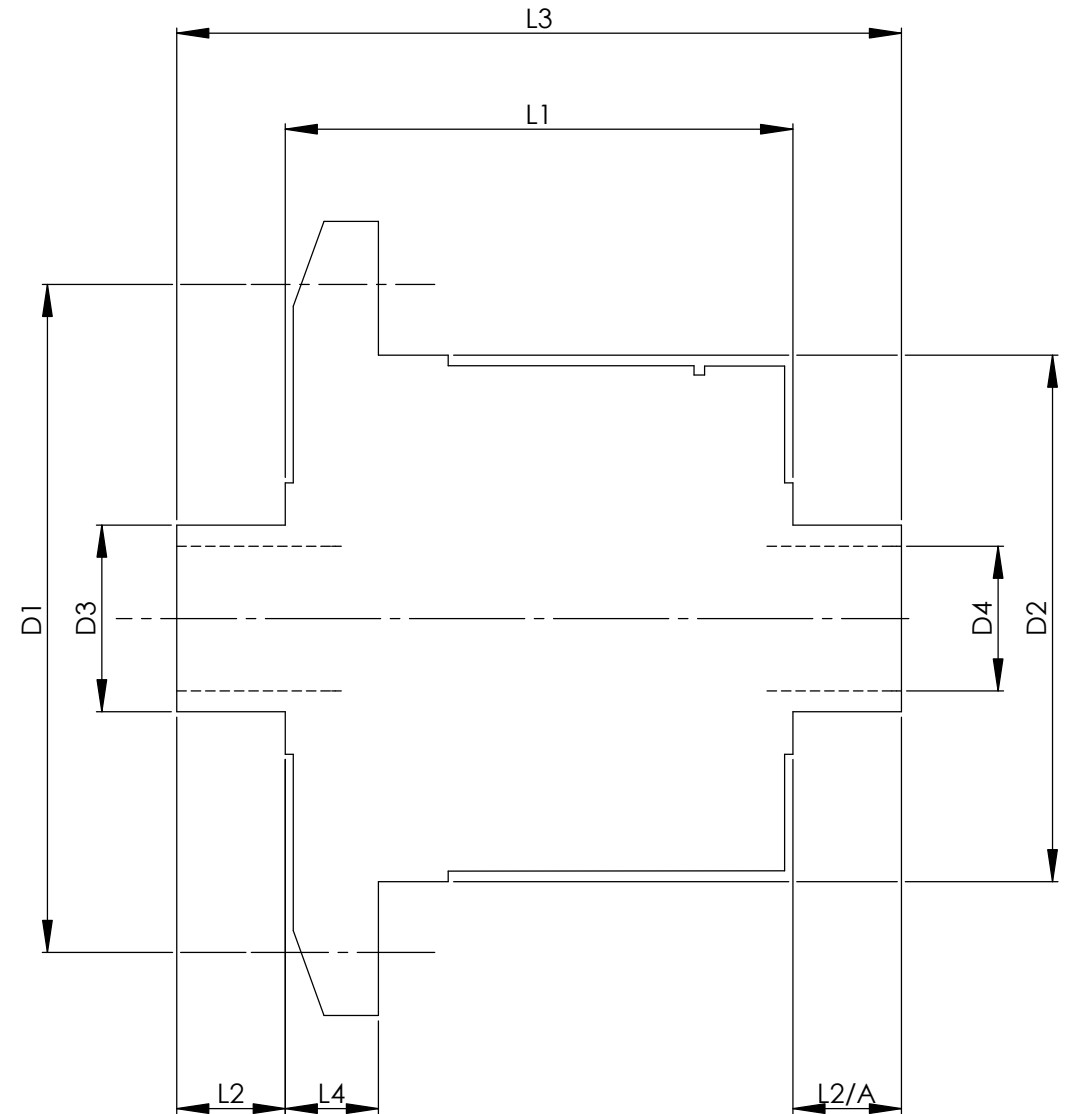


		INCH	MM
CROWN WHEEL BOLT PCD	D1	5.750	146
No. OF BOLTS		12	12
THREAD / THRO' HOLE		0.492	12.5
CROWN WHEEL SPIGOT DIA	D2	4.6456	118.0
BEARING DIA	D3	1.9691	50.0
BEARING DISTANCE	L1	4.490	114.0
SPIGOT LENGTH	L2	0.835	21.2
	L2/A	1.075	27.3
OVERALL LENGTH	L3	6.400	163.8
BEARING/CROWN WHEEL	L4	0.500	12.7
BORE	D4	1.3786	35.0
DRIVE SHAFT SPLINE:-			
No. OF TEETH		43	18
PITCH		32/64 DP	1.75 MOD.
TYPE		FILLET ROOT	
PRESSURE ANGLE		45 DEG	



TITLE R.W.D. DIFF DATA SHEET.
SCALE 1:1 U.O.S. SHEET 1 OF 1
Drg. No. QDF1Q

Quaife Design & Development.

IF IN DOUBT, ASK.

THIS DRAWING OR DESIGN IS STRICTLY CONFIDENTIAL & THE COPYRIGHT THEREIN IS THE EXCLUSIVE PROPERTY OF R.T. QUAIFF ENGINEERING LTD. AND MAY NOT BE USED COPIED OR EXHIBITED WITHOUT THEIR WRITTEN PERMISSION.

FINISH. MACH.	GRIND@G
LIMITS. FRACT. ± 1/64"	
DEC. ± 0.005"	
MATERIAL.	
TREATMENT.	
ISSUE. 01 DATE. 19.5.05	
DRAWN BY. M.L.M.	
Used In.	PORSCHE 911/915 & 924 Turbo