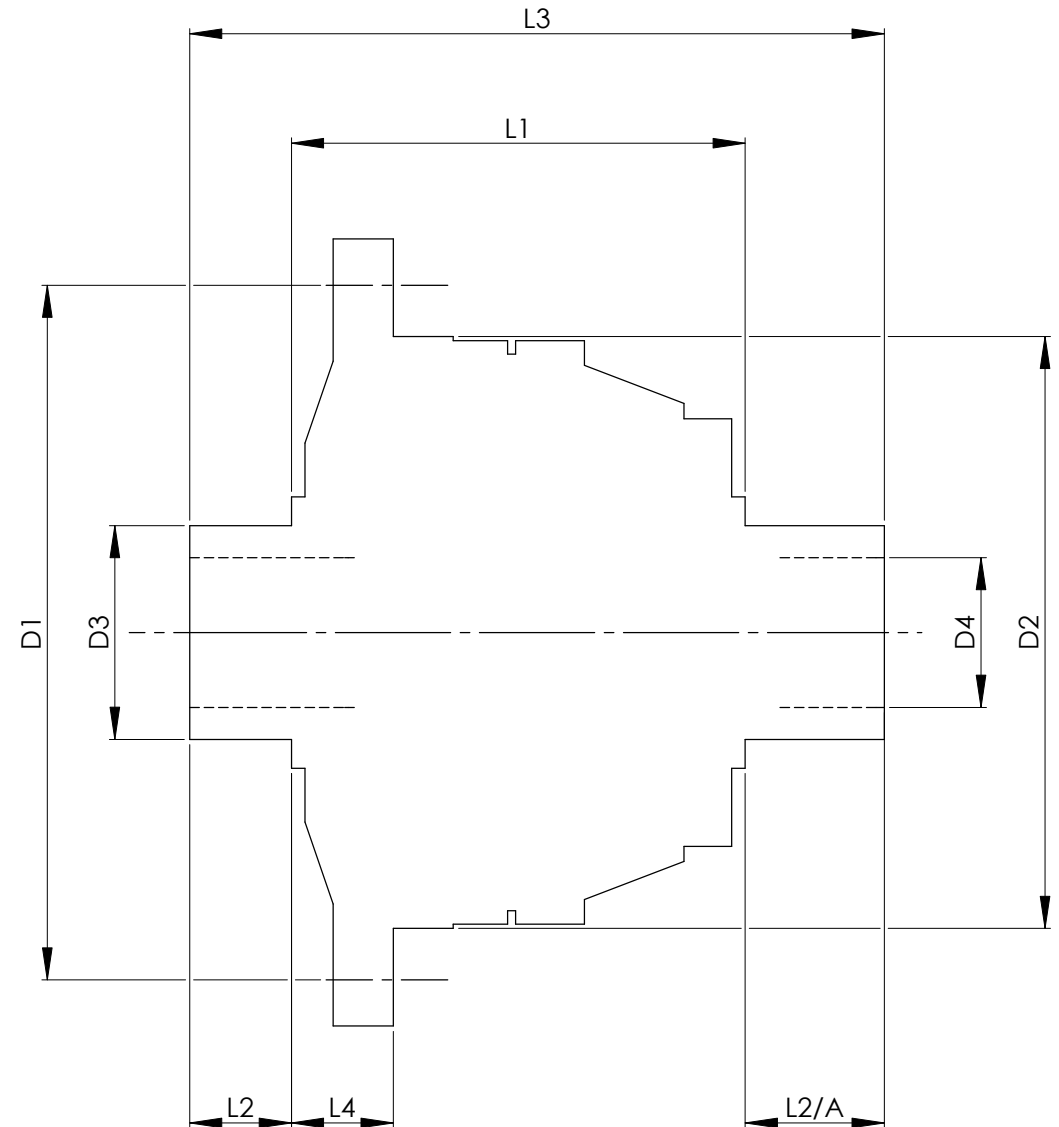


		INCH	MM
CROWN WHEEL BOLT PCD	D1	5.197	132.0
No. OF BOLTS		8	8
THREAD / THRO' HOLE		0.395	10.0
CROWN WHEEL SPIGOT DIA	D2	4.3332	110.1
BEARING DIA	D3	1.6268	41.3
BEARING DISTANCE	L1	4.089	103.9
SPIGOT LENGTH	L2	0.805	20.4
	L2/A	0.800	20.3
OVERALL LENGTH	L3	5.694	144.6
BEARING/CROWN WHEEL	L4	0.8	20.3
BORE	D4	1.074	27.3
DRIVE SHAFT SPLINE:-			
No. OF TEETH		24	
PITCH		24/48 D.P.	
TYPE		FILLET ROOT SIDE FIT	
PRESSURE ANGLE		45°	



TITLE F.W.D. DIFF DATA SHEET.

SCALE 1:1 U.O.S. SHEET 1 OF 1

Drg. No. QDF26B

Quaife Design & Development.

IF IN DOUBT, ASK.

THIS DRAWING OR DESIGN IS STRICTLY CONFIDENTIAL & THE COPYRIGHT THEREIN IS THE EXCLUSIVE PROPERTY OF R.T. QUAIFF ENGINEERING LTD. AND MAY NOT BE USED COPIED OR EXHIBITED WITHOUT THEIR WRITTEN PERMISSION.

FINISH. MACH, GRIND@G
 LIMITS. FRACT. ± 1/64".
 DEC. ± 0.005".
 MATERIAL.
 TREATMENT.
 ISSUE. 01 DATE. 26.6.07
 DRAWN BY. J.P.D.

Used In. F28 4WD - REAR DIFF.