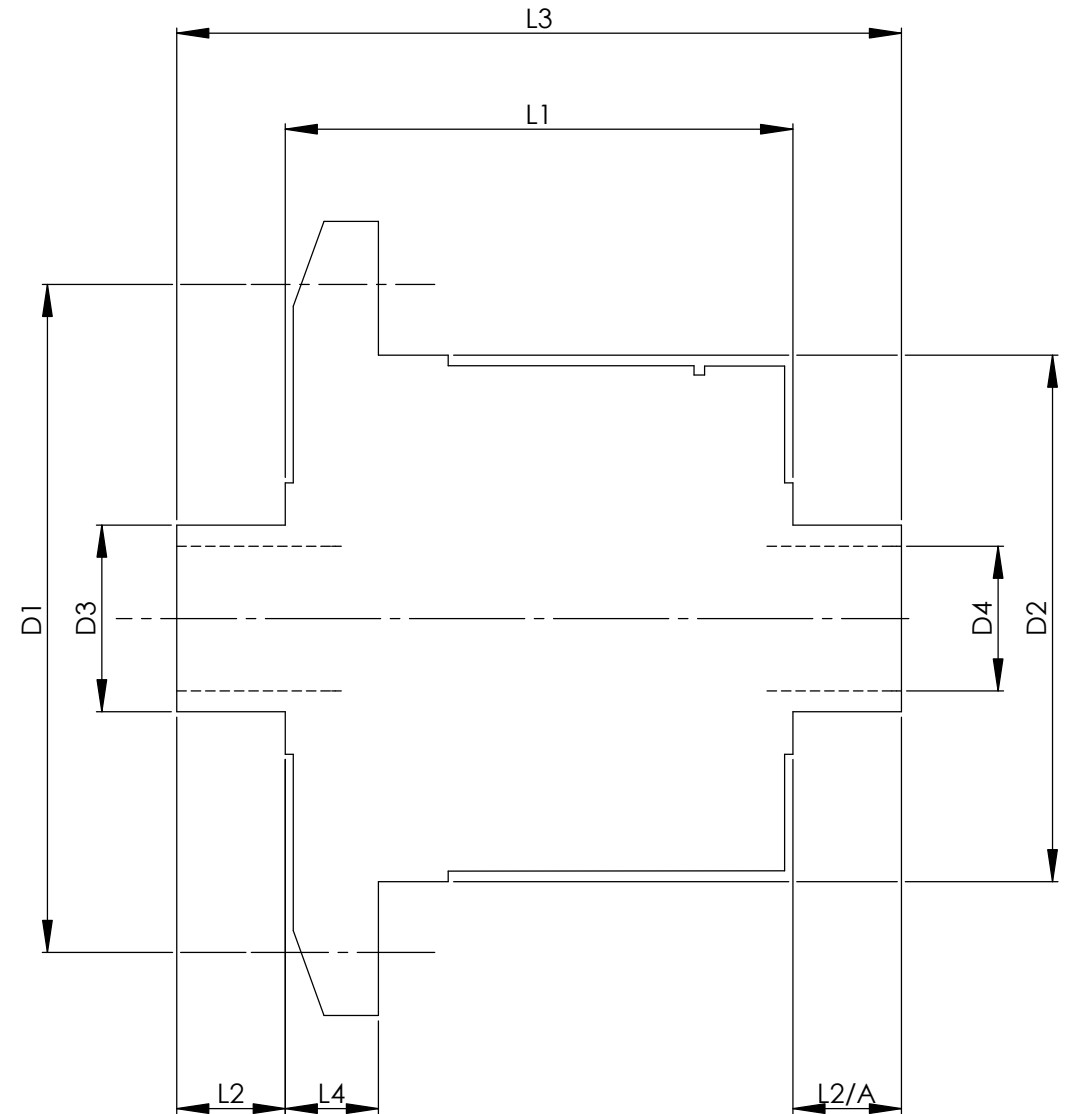


		INCH	MM
CROWN WHEEL BOLT PCD	D1	5.315	135
No. OF BOLTS		8	8
THREAD / THRO' HOLE		0.394	10.0
CROWN WHEEL SPIGOT DIA	D2	4.5273	115.0
BEARING DIA	D3	1.5758	40.0
BEARING DISTANCE	L1	4.530	115.0
SPIGOT LENGTH	L2	0.665	16.9
	L2/A	0.665	16.9
OVERALL LENGTH	L3	5.860	148.8
BEARING/CROWN WHEEL	L4	0.866	22.0
BORE	D4	1.181	30.0
DRIVE SHAFT SPLINE:-			
No. OF TEETH		25	
PITCH		1 MOD.	
TYPE			
PRESSURE ANGLE		37.5 DEG	



TITLE R.W.D. DIFF DATA SHEET.
SCALE 1:1 U.O.S. SHEET 1 OF 1
<b>Drg. No.</b> QDF5L

**Quaife Design & Development.**

IF IN DOUBT, ASK.

THIS DRAWING OR DESIGN IS STRICTLY CONFIDENTIAL & THE COPYRIGHT THEREIN IS THE EXCLUSIVE PROPERTY OF R.T. QUAIFF ENGINEERING LTD. AND MAY NOT BE USED COPIED OR EXHIBITED WITHOUT THEIR WRITTEN PERMISSION.

FINISH. MACH.	GRIND@G
LIMITS. FRACT. ± 1/64"	
DEC. ± 0.005"	
MATERIAL.	
TREATMENT.	
ISSUE. 01 DATE. 19.5.05	
DRAWN BY. M.L.M.	
<b>Used In.</b> NISSAN R180 24-280Z	
(115mm Crownwheel)	