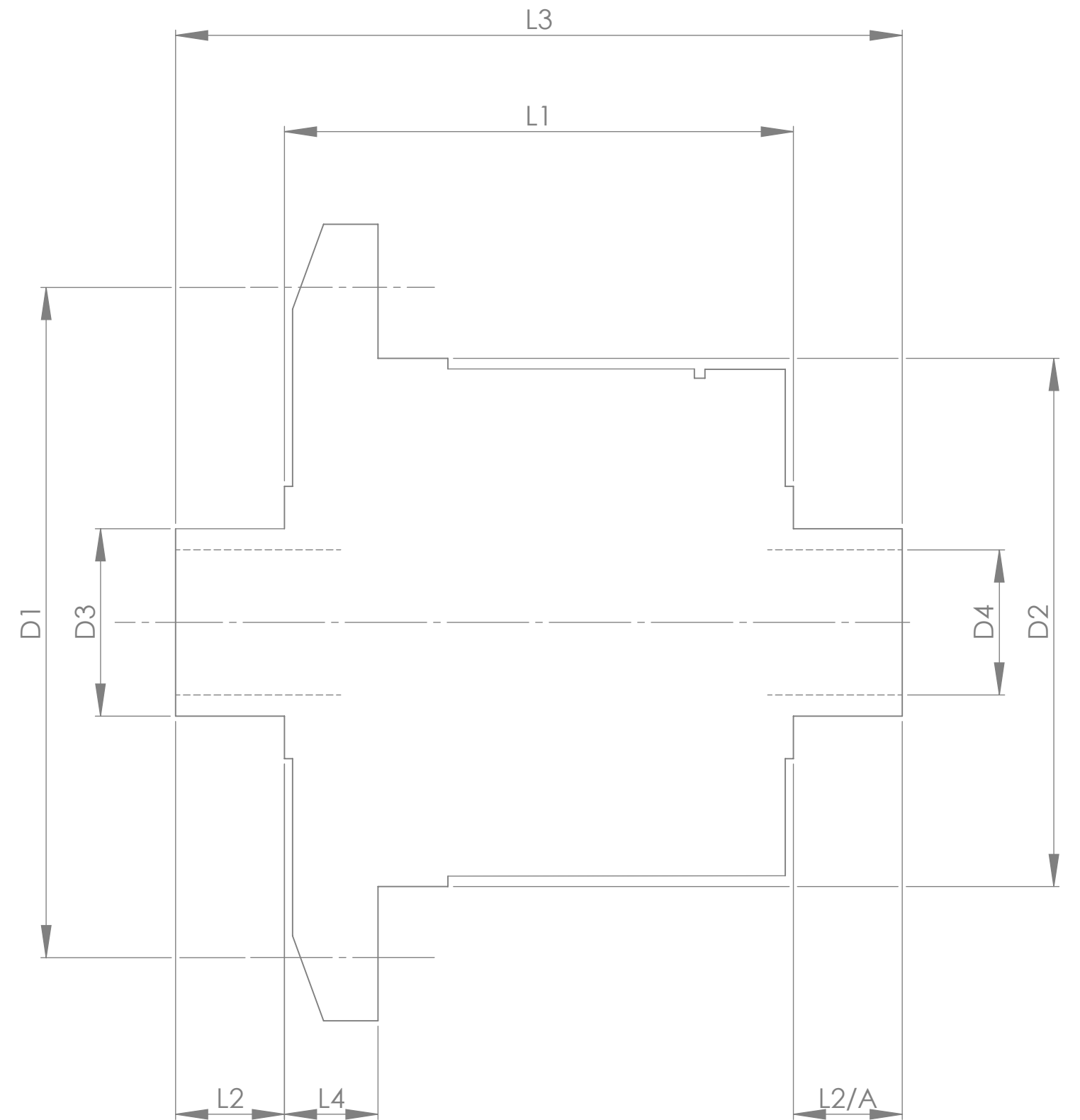


		INCH	MM
CROWN WHEEL BOLT PCD	D1	5.250	133.4
No. OF BOLTS		8	8
THREAD / THRO' HOLE		0.375	9.5
CROWN WHEEL SPIGOT DIA	D2	4.4368	112.7
BEARING DIA	D3	1.7822	45.3
BEARING DISTANCE	L1	5.281	134.1
SPIGOT LENGTH	L2	0.825	21.0
	L2/A	0.825	21.0
OVERALL LENGTH	L3	6.931	176.0
BEARING/CROWN WHEEL	L4	1.010	25.7
BORE	D4	1.126	28.6
DRIVE SHAFT SPLINE:-			
No. OF TEETH		25	
PITCH		24/48 DP	
TYPE		FLAT ROOT	SIDE FIT
PRESSURE ANGLE		30 DEG	

2



TITLE R.W.D. DIFF DATA SHEET.  
 SCALE 1:1 U.O.S. SHEET 1 OF 1  
**Drg. No. QDF6KC**

**Quaife Design & Development.**

IF IN DOUBT, ASK.

THIS DRAWING OR DESIGN IS STRICTLY CONFIDENTIAL & THE COPYRIGHT THEREIN IS THE EXCLUSIVE PROPERTY OF RT QUAIPE ENGINEERING LTD. AND MAY NOT BE USED COPIED OR EXHIBITED WITHOUT THEIR WRITTEN PERMISSION.

FINISH. MACH, GRIND@G  
 LIMITS. FRACT. ± 1/64".  
 DEC. ± 0.005".  
 MATERIAL.  
 TREATMENT.  
 ISSUE. 02 DATE. 19.5.05  
 DRAWN BY. M.L.M.  
**Used In. MGB V8 / MGC**