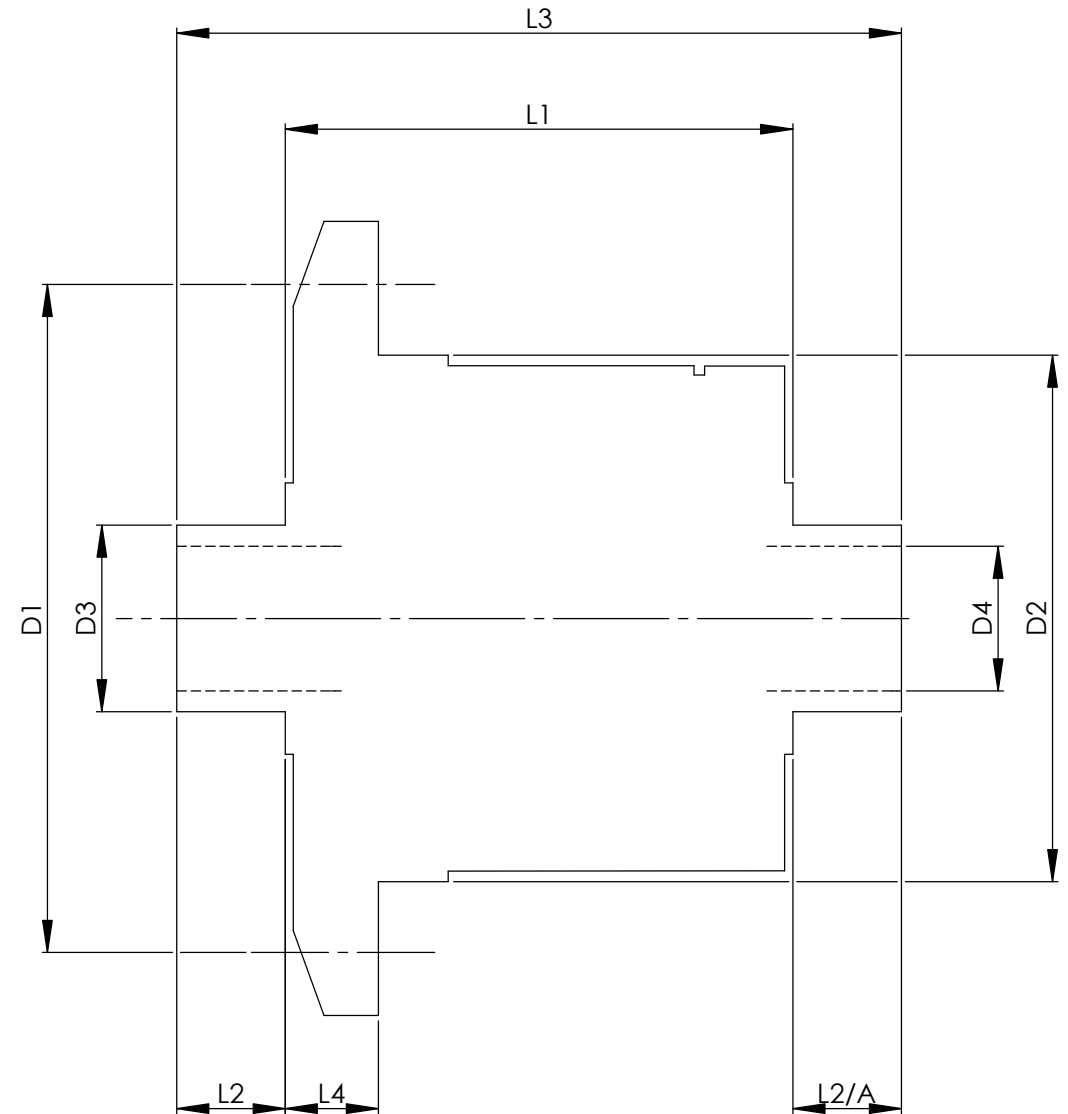


		INCH	MM
CROWN WHEEL BOLT PCD	D1	5.433	138
No. OF BOLTS		8	8
THREAD / THRO' HOLE		0.421	10.7
CROWN WHEEL SPIGOT DIA	D2	4.2533	108.0
BEARING DIA	D3	2.9537	75.0
BEARING DISTANCE	L1	4.055	103.0
SPIGOT LENGTH	L2	0.984	25.0
	L2/A	0.984	25.0
OVERALL LENGTH	L3	6.024	153.0
BEARING/CROWN WHEEL	L4	0.335	8.5
BORE	D4	2.560	65.0
DRIVE SHAFT SPLINE:-			
No. OF TEETH			
PITCH			
TYPE			
PRESSURE ANGLE			



TITLE R.W.D. DIFF DATA SHEET.
SCALE 1:1 U.O.S. SHEET 1 OF 1
Drg. No. QDF9R

Quaife Design & Development.

IF IN DOUBT, ASK.

THIS DRAWING OR DESIGN IS STRICTLY CONFIDENTIAL & THE COPYRIGHT THEREIN IS THE EXCLUSIVE PROPERTY OF R.T. QUAIFF ENGINEERING LTD. AND MAY NOT BE USED COPIED OR EXHIBITED WITHOUT THEIR WRITTEN PERMISSION.

FINISH. MACH.	GRIND@G
LIMITS. FRACT. ± 1/64"	
DEC. ± 0.005"	
MATERIAL.	
TREATMENT.	
ISSUE. 01 DATE. 23.5.05	
DRAWN BY. M.L.M.	
Used In. VW BEETLE SWING AXLE	