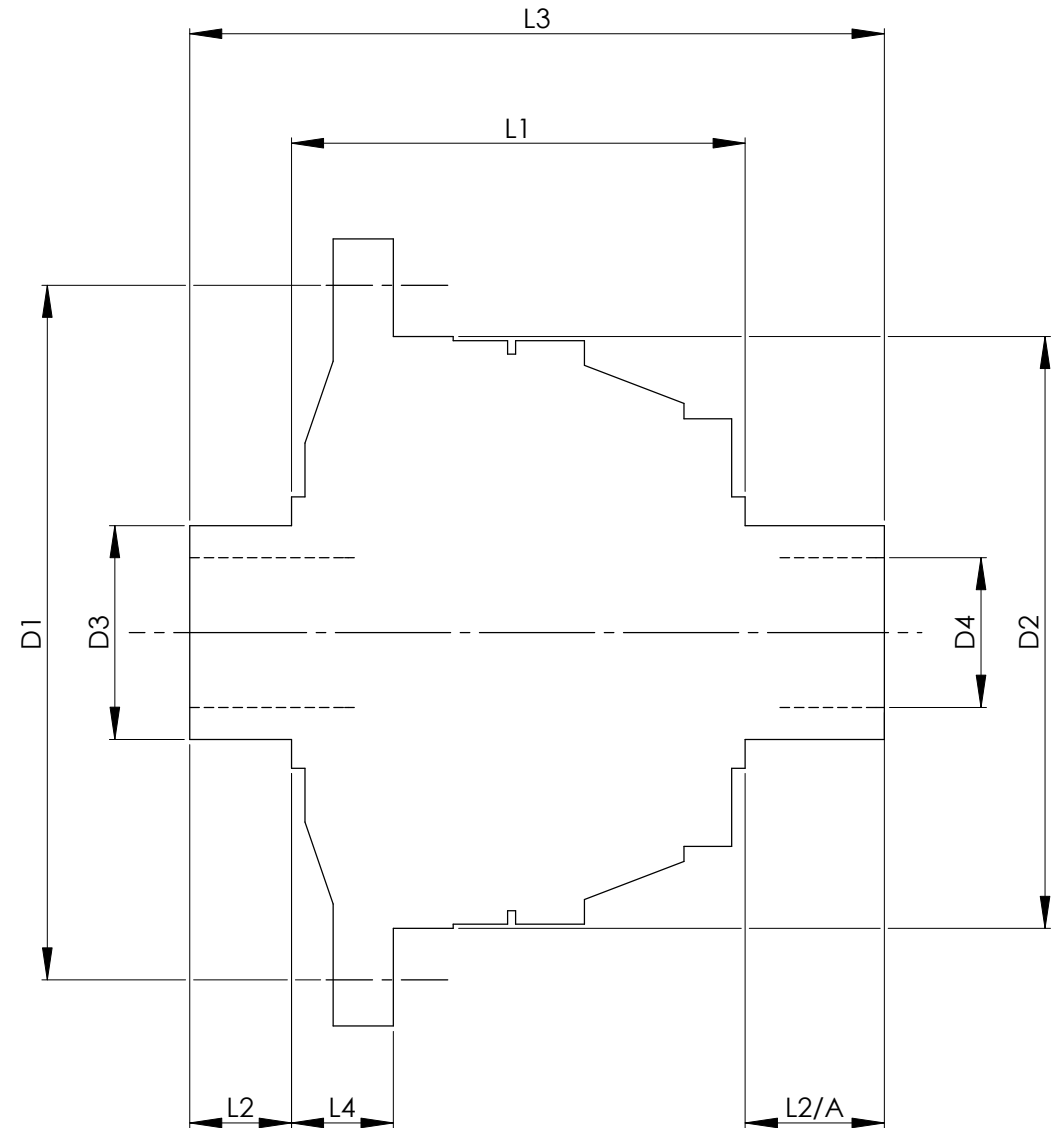


		INCH	MM
CROWN WHEEL BOLT PCD	D1	5.433	138
No. OF BOLTS		10	10
THREAD / THRO' HOLE		M10x1 RH	M10x1 RH
CROWN WHEEL SPIGOT DIA	D2	4.6063	117.0
BEARING DIA	D3	1.575	40.0
BEARING DISTANCE	L1	3.577	90.8
SPIGOT LENGTH	L2	0.885	22.5
	L2/A	0.885	22.5
OVERALL LENGTH	L3	5.347	135.8
BEARING/CROWN WHEEL	L4	0.748	19.0
BORE	D4	1.103	28.0
DRIVE SHAFT SPLINE:-			
No. OF TEETH		27	
PITCH		1 MOD.	
TYPE			
PRESSURE ANGLE		37.5 DEG	



TITLE F.W.D. DIFF DATA SHEET.

SCALE 1:1 U.O.S. SHEET 1 OF 1

Drg. No. QDF9U

Quaife Design & Development.

IF IN DOUBT, ASK.

THIS DRAWING OR DESIGN IS STRICTLY CONFIDENTIAL & THE COPYRIGHT THEREIN IS THE EXCLUSIVE PROPERTY OF R.T. QUAIFF ENGINEERING LTD. AND MAY NOT BE USED COPIED OR EXHIBITED WITHOUT THEIR WRITTEN PERMISSION.

FINISH. MACH.	GRIND@G
LIMITS. FRACT. ± 1/64"	
DEC. ± 0.005"	
MATERIAL.	
TREATMENT.	
ISSUE. 01 DATE. 18.5.05	
DRAWN BY. M.L.M.	
Used In.	HONDA CIVIC EP3 & NEW CIVIC Type R