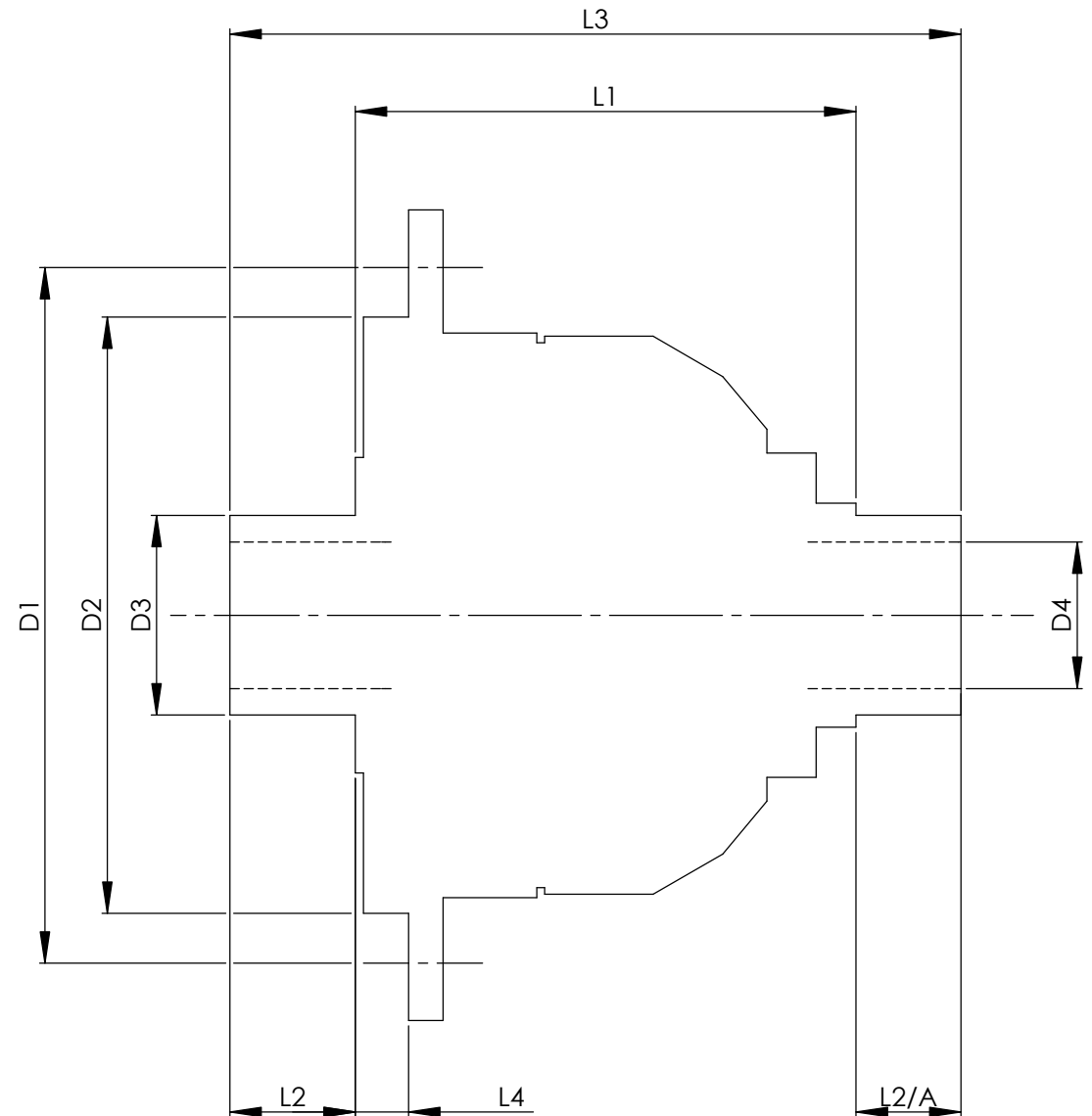


Drg No. QDH11B

REMOVE ALL BURRS AND SHARP EDGES.

THIRD ANGLE PROJECTION.

		INCH	MM
CROWN WHEEL BOLT PCD	D1	5.512	140
No. OF BOLTS		10	10
THREAD / THRO' HOLE		M12x1.25	M12x1.25
CROWN WHEEL SPIGOT DIA	D2	3.779	96.0
BEARING DIA	D3	1.6263	41.3
	D3/A	2.5595	65.0
BEARING DISTANCE	L1	4.172	106.0
SPIGOT LENGTH	L2	0.782	19.9
	L2/A	0.690	17.5
OVERALL LENGTH	L3	5.644	143.4
BEARING/CROWN WHEEL	L4	0.343	8.7
BORE	D4	1.045	26.5
	D4/A	1.065	27.0
DRIVE SHAFT SPLINE:-		EXTERNAL	EXTERNAL
No. OF TEETH		38	36
PITCH		20/40 DP	24/48 DP
TYPE		FLAT ROOT	FLAT ROOT
PRESSURE ANGLE		30 DEG	30 DEG



TITLE F.W.D. DIFF DATA SHEET.

SCALE 1:1 U.O.S. SHEET 1 OF 1

Drg. No. QDH11B

Quaife Design & Development.

IF IN DOUBT, ASK.

THIS DRAWING OR DESIGN IS STRICTLY CONFIDENTIAL & THE COPYRIGHT THEREIN IS THE EXCLUSIVE PROPERTY OF R.T. QUAIFF ENGINEERING LTD. AND MAY NOT BE USED COPIED OR EXHIBITED WITHOUT THEIR WRITTEN PERMISSION.

FINISH. MACH, GRIND@G
 LIMITS. FRACT. ± 1/64".
 DEC. ± 0.005".
 MATERIAL.
 TREATMENT.
 ISSUE. 01 DATE. 19.5.05
 DRAWN BY. M.L.M.

Used In MITSUBISHI Lancer Evolution 5 / 6 & 7 (front)