

Drg No. QDH5J

REMOVE ALL BURRS AND SHARP EDGES.

THIRD ANGLE PROJECTION.

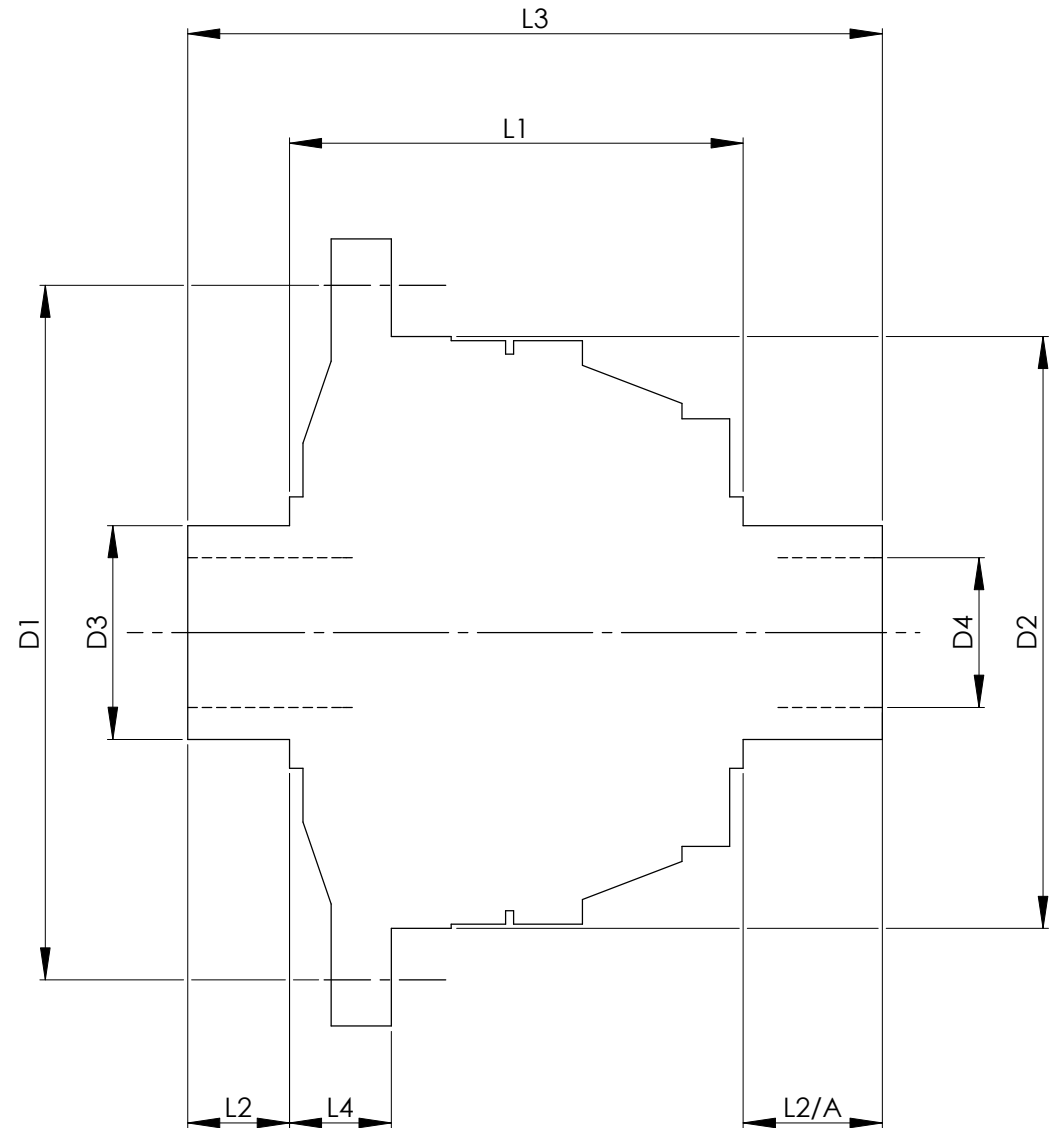
CROWN WHEEL BOLT PCD
 No. OF BOLTS
 THREAD / THRO' HOLE
 CROWN WHEEL SPIGOT DIA
 BEARING DIA
 BEARING DISTANCE
 SPIGOT LENGTH
 OVERALL LENGTH
 BEARING/CROWN WHEEL
 BORE

| | | INCH | MM |
|------|--|----------|----------|
| D1 | | 5.040 | 128 |
| | | 12 | 12 |
| | | M10x1.25 | M10x1.25 |
| D2 | | 4.3306 | 110.0 |
| D3 | | 1.9698 | 50.0 |
| L1 | | 3.565 | 90.6 |
| L2 | | 0.795 | 20.2 |
| L2/A | | 0.770 | 19.6 |
| L3 | | 5.130 | 130.3 |
| L4 | | 1.165 | 29.6 |
| D4 | | 1.074 | 27.3 |

DRIVE SHAFT SPLINE:-

No. OF TEETH
 PITCH
 TYPE
 PRESSURE ANGLE

| | |
|-------------|----------|
| 34 | |
| 32/64 DP | |
| FILLET ROOT | SIDE FIT |
| 45 DEG | |



TITLE F.W.D. DIFF DATA SHEET.

SCALE 1:1 U.O.S. SHEET 1 OF 1

Drg. No. QDH5J

Quaife Design & Development.

IF IN DOUBT, ASK.

THIS DRAWING OR DESIGN IS STRICTLY CONFIDENTIAL & THE COPYRIGHT THEREIN IS THE EXCLUSIVE PROPERTY OF R.T. QUAIFF ENGINEERING LTD. AND MAY NOT BE USED COPIED OR EXHIBITED WITHOUT THEIR WRITTEN PERMISSION.

| | |
|------------------------|---------------|
| FINISH. MACH. | GRIND@G |
| LIMITS. FRACT. ± 1/64" | |
| DEC. ± 0.005" | |
| MATERIAL. | |
| TREATMENT. | |
| ISSUE. 01 | DATE. 20.5.05 |
| DRAWN BY. M.L.M. | |

Used In. SAAB NEW 900 95 - 98 MY
 9 - 3 98MY Current