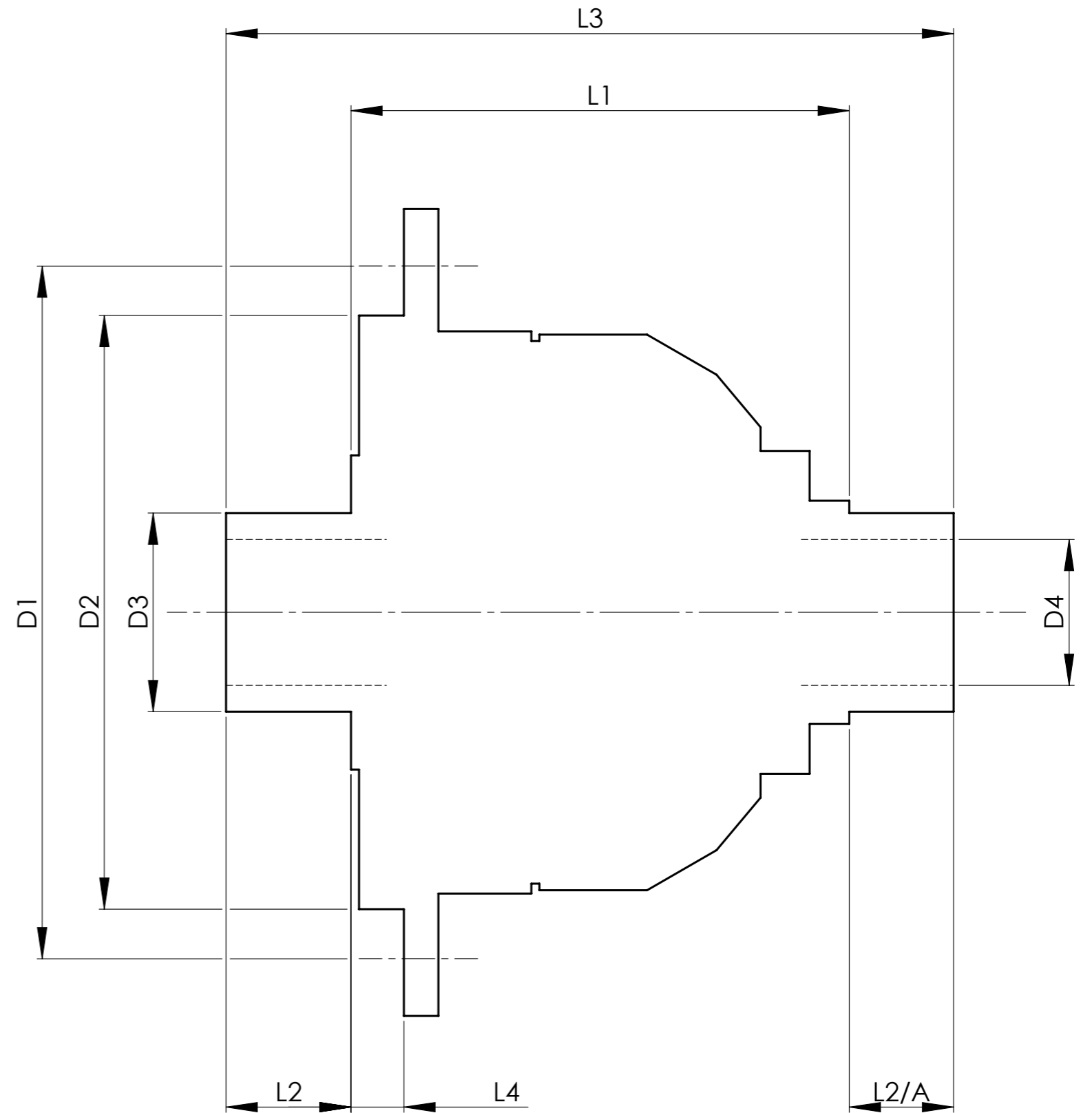


		INCH	MM
CROWN WHEEL BOLT PCD	D1	5.354	136.0
No. OF BOLTS		8	8
THREAD / THRO' HOLE		M12x1.25	M12x1.25
CROWN WHEEL SPIGOT DIA	D2	4.487	113.97
BEARING DIA	D3	1.970	50.04
BEARING DISTANCE	L1	3.230	82.04
SPIGOT LENGTH	L2	1.210	30.73
	L2/A	1.202	30.53
OVERALL LENGTH	L3	5.642	143.31
BEARING/CROWN WHEEL	L4	0.273	6.93
BORE	D4	1.064	27.03

DRIVE SHAFT SPLINE:-

No. OF TEETH	25
PITCH	1 MOD
TYPE	FILLET ROOT SIDE FIT
PRESSURE ANGLE	37.5°



TITLE F.W.D. DIFF DATA SHEET.
SCALE 1:1 U.O.S. SHEET 1 OF 1
<b>Drg. No.</b> QDF17L

**Quaife Design & Development.**

IF IN DOUBT, ASK.

THIS DRAWING OR DESIGN IS STRICTLY CONFIDENTIAL & THE COPYRIGHT THEREIN THE EXCLUSIVE PROPERTY OF RT QUAIPE ENGINEERING LTD. AND MAY NOT BE USED COPIED OR EXHIBITED WITHOUT THEIR WRITTEN PERMISSION.

FINISH. MACH,	GRIND@G
LIMITS. FRACT. ± 1/64".	
DEC. ± 0.005".	
MATERIAL.	
TREATMENT.	
ISSUE. 01 DATE. 6.7.11	
DRAWN BY. J.P.D.	
<b>Used In.</b> NISSAN PRIMERA/ ALMERA FWD	