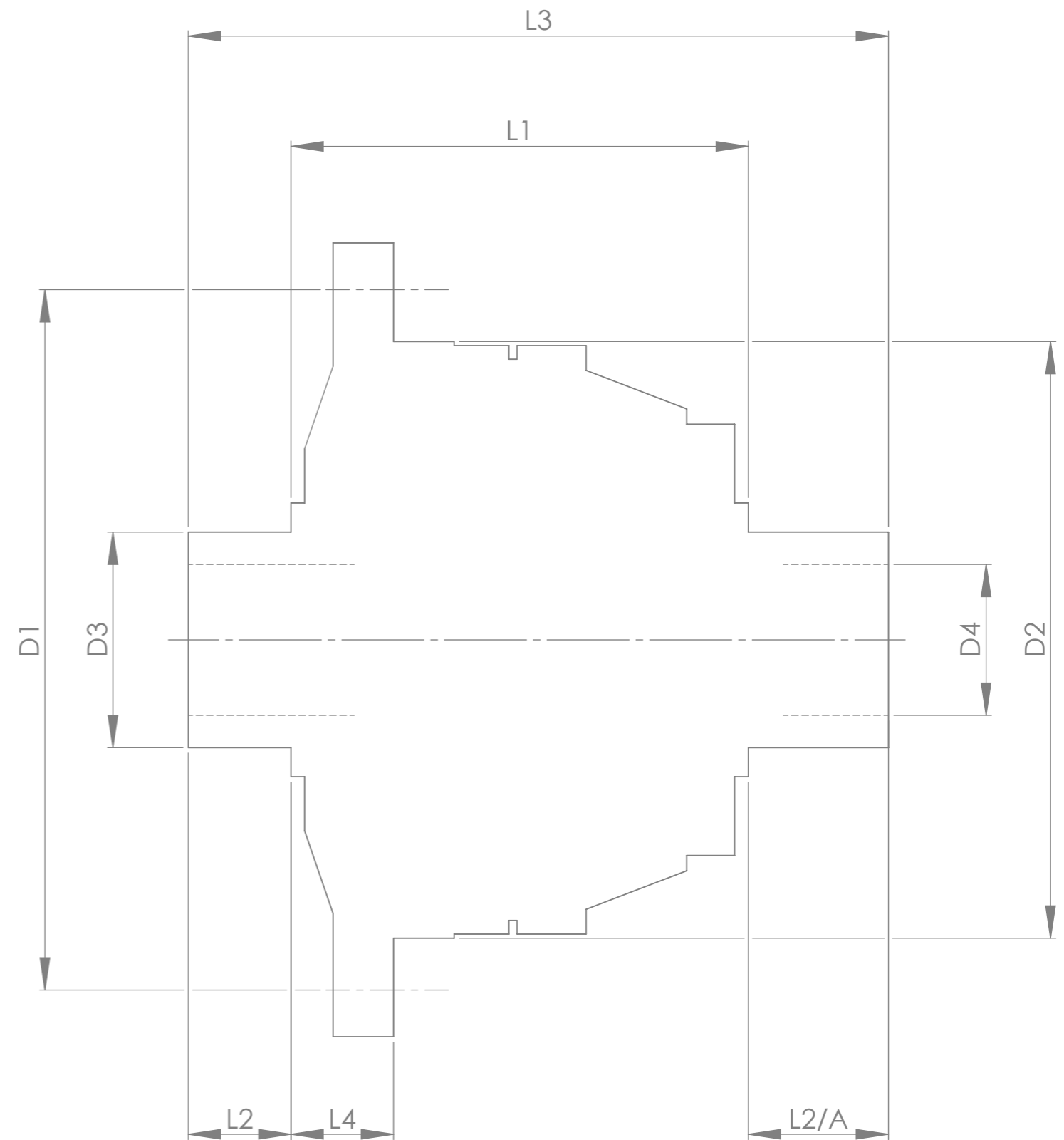


Drg No. QDF17U

REMOVE ALL BURRS AND SHARP EDGES.

THIRD ANGLE PROJECTION.

		INCH	MM
CROWN WHEEL BOLT PCD	D1	5.433	138
No. OF BOLTS		10	10
THREAD / THRO' HOLE		M11x1.0	M11x1.0
CROWN WHEEL SPIGOT DIA	D2	4.606	117.0
BEARING DIA	D3	1.576	40.0
BEARING DISTANCE	L1	3.577	90.9
SPIGOT LENGTH	L2	0.885	22.5
	L2/A	0.885	22.5
OVERALL LENGTH	L3	5.347	135.8
BEARING/CROWN WHEEL	L4	0.748	19.0
BORE	D4	1.227	31.2
DRIVE SHAFT SPLINE:-			
No. OF TEETH		28	
PITCH		24/48 D.P.	
TYPE		FILLET ROOT SDE FIT	
PRESSURE ANGLE		45°	



TITLE F.W.D. DIFF DATA SHEET.

SCALE 1:1 U.O.S. SHEET 1 OF 1

**Drg. No.** QDF17U

**Quaife Design & Development.**

IF IN DOUBT, ASK.

THIS DRAWING OR DESIGN IS STRICTLY CONFIDENTIAL & THE COPYRIGHT THEREIN IS THE EXCLUSIVE PROPERTY OF RT QUAIFE ENGINEERING LTD. AND MAY NOT BE USED COPIED OR EXHIBITED WITHOUT THEIR WRITTEN PERMISSION.

FINISH. MACH, GRIND@G  
 LIMITS. FRACT. ± 1/64".  
 DEC. ± 0.005".  
 MATERIAL.  
 TREATMENT.  
 ISSUE. 01 DATE. 09/07/2018  
 DRAWN BY. J.B.P.  
**Used In.** HONDA CIVIC EP3  
 DSS 28T, STD BEARINGS