

8f['Bc" E 8<*A

F9A C J 9'5@@6l FFG'5B8 'G<5FD'98; 9G'

Hk #8 '5B; @9'DFC >97 Hc B"

		INCH	MM
CROWN WHEEL BOLT PCD	D1	5.192	131.9
No. OF BOLTS		8	8
THREAD / THRO' HOLE		0.447	11.4
CROWN WHEEL SPIGOT DIA	D2	4.500	114.3
BEARING DIA	D3	1.785	45.3
BEARING DISTANCE	L1	5.250	133.4
SPIGOT LENGTH	L2	0.835	21.2
	L2/A	0.833	21.2
OVERALL LENGTH	L3	6.918	175.7
BEARING/CROWN WHEEL	L4	1.636	41.6
BORE	D4	1.296	32.9

DRIVE SHAFT SPLINE:-

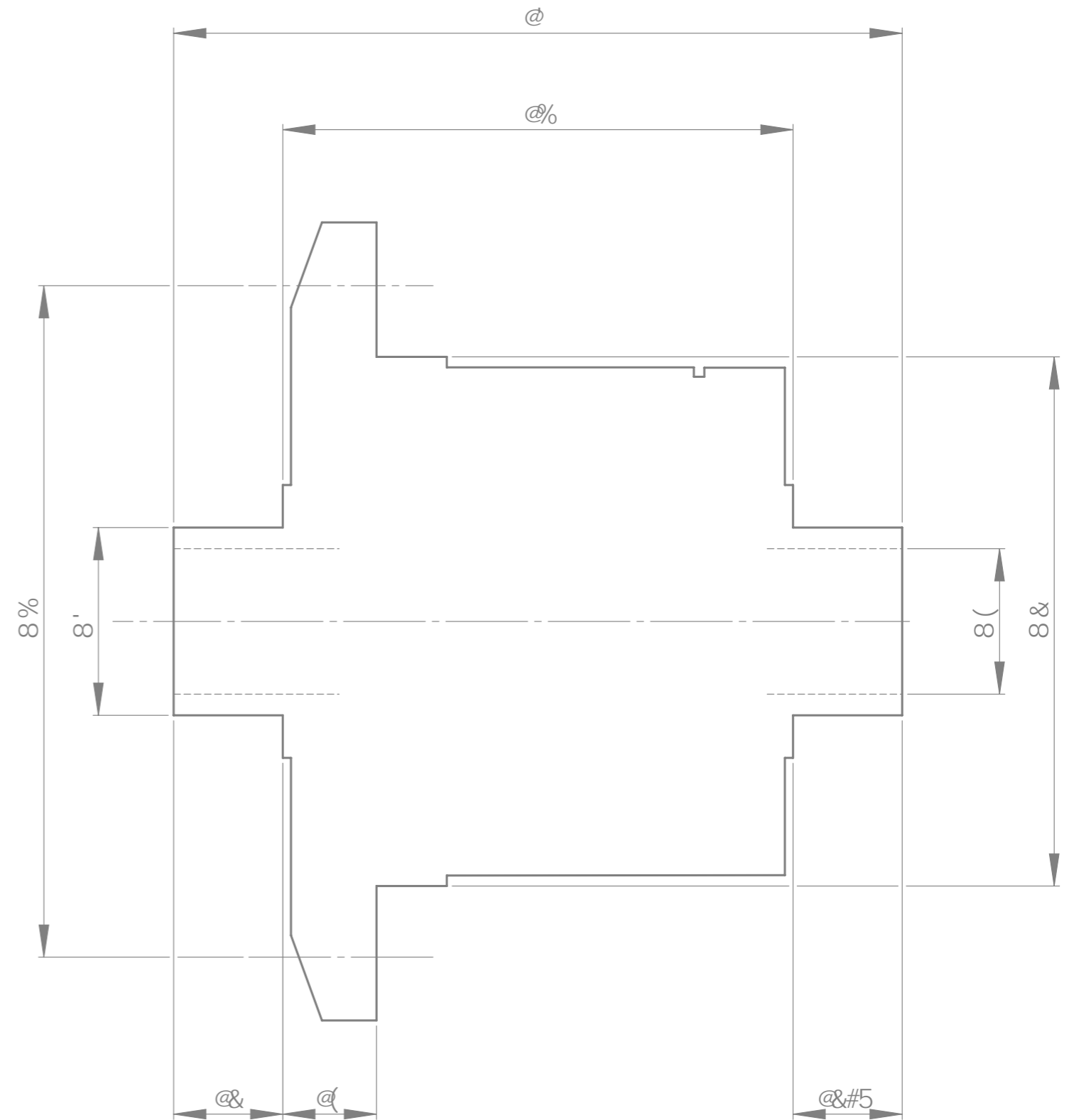
No. OF TEETH

PITCH

TYPE

PRESSURE ANGLE

28
24/48 D.P.
FILLET ROOT SIDE FIT
45°



H#9 F"K "8"8÷: '85H5 'G<99H'
 G7 5@9%'%l "C "G" G<99H%C: '%
Fti 0Pq0 E 8<*A

S wcltg'F guki p'(' 'F gxgnr o gpw0

÷ 'B '8C I 6H5G?"

H:6BF5K B: CF 8'9G: B 6GF-7HM
 7CB: 8'9B H5W/ H-9'7C DM: <HK-9'9B
 H:9'9L 7'8 G:9'9B C'D'9'9C:
 F'HE 1 5=9'9B: 8'9'9: B: 9B2
 5B8 A 5MBCH691 0'8 7C D'9B CF 9L: 6+H9B
 K H:C I H'9'9L K F H'9B D'9A 4G'6 B'

: B C<"A 57 <ž '... ; F B84 ;
 @A #G": F57 H' ± '%#* (" "
 897 "' + '\$\$\$\$)' "'
 A 5 H9F 5@ '...
 HF 95HA 9BH'...
 GG 9" \$% 85H9" *"' "\$-
 8F5K B '6M >'D"8"
Wugf 'Kp0 HJ F '7 9F 69F 5