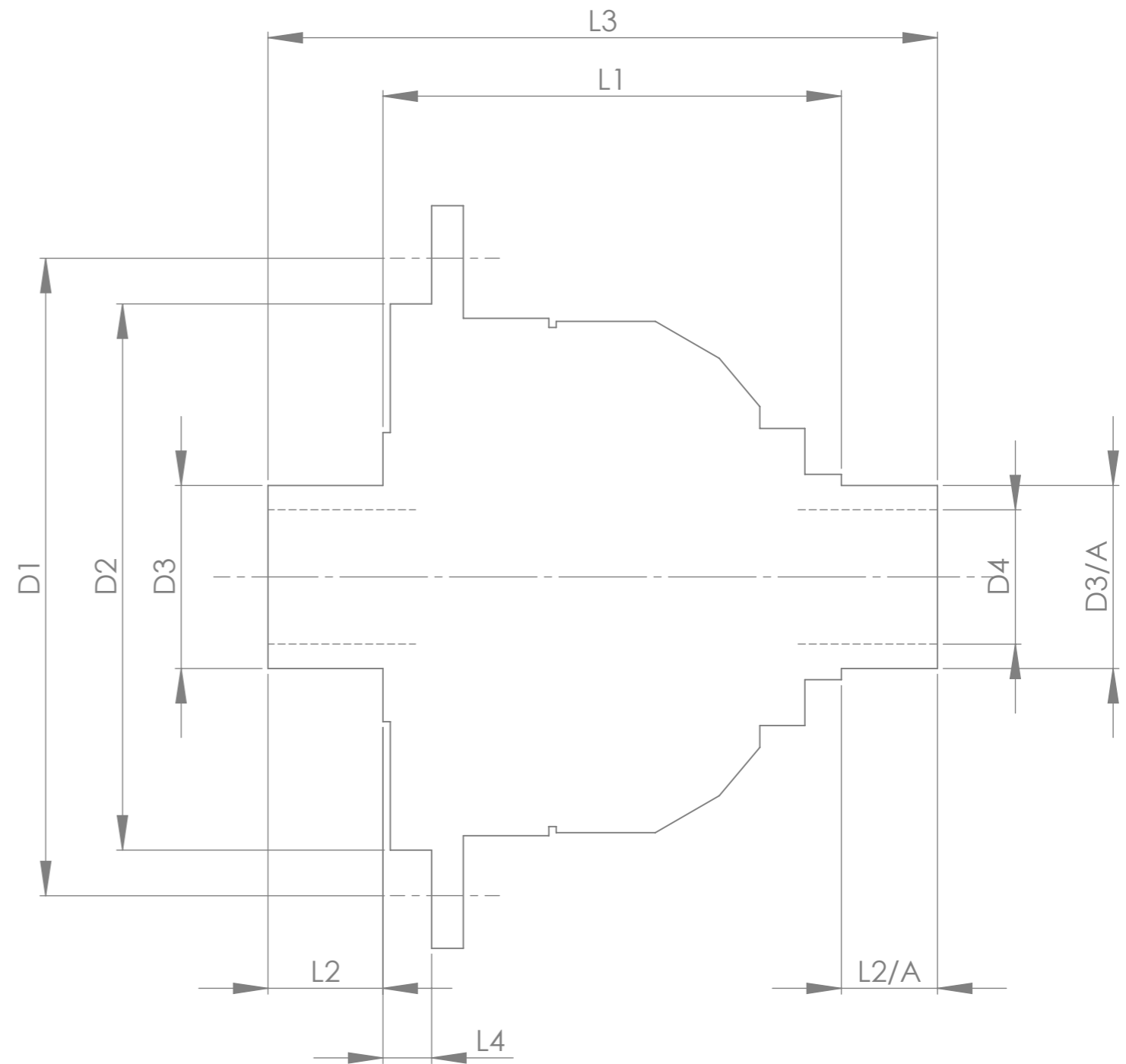


		INCH	MM
CROWN WHEEL BOLT PCD	D1	5.433	138
No. OF BOLTS		16	
THREAD / THRO' HOLE		M11x1.0	
CROWN WHEEL SPIGOT DIA	D2	4.606	117.0
FLANGE END BEARING DIA	D3	1.969	50.0
SMALL END BEARING DIA	D3/A	1.772	45.0
BEARING DISTANCE	L1	3.665	93.1
SPIGOT LENGTH	L2	0.827	21.0
	L2/A	0.886	22.5
OVERALL LENGTH	L3	5.374	136.5
BEARING/CROWN WHEEL	L4	0.886	22.5
BORE	D4	1.260	32.0
DRIVE SHAFT SPLINE:-			
No. OF TEETH		31	
PITCH		1 MOD.	
TYPE		FILLET ROOT SIDE FIT	
PRESSURE ANGLE		37.5 DEG	



TITLE F.W.D. DIFF DATA SHEET.

SCALE 1:1 U.O.S. SHEET 1 OF 1

**Drg. No.** QDF20U

**Quaife Design & Development.**

IF IN DOUBT, ASK.

THIS DRAWING OR DESIGN IS STRICTLY CONFIDENTIAL & THE COPYRIGHT THEREIN THE EXCLUSIVE PROPERTY OF RT QUAIFE ENGINEERING LTD. AND MAY NOT BE USED COPIED OR EXHIBITED WITHOUT THEIR WRITTEN PERMISSION.

FINISH. MACH, GRIND@G  
 LIMITS. FRACT. ± 1/64".  
 DEC. ± 0.005".  
 MATERIAL.  
 TREATMENT.  
 ISSUE. 01 DATE. 02/05/2017  
 DRAWN BY. J.P.  
**Used In.** HONDA CIVIC  
 FK2 TYPE R