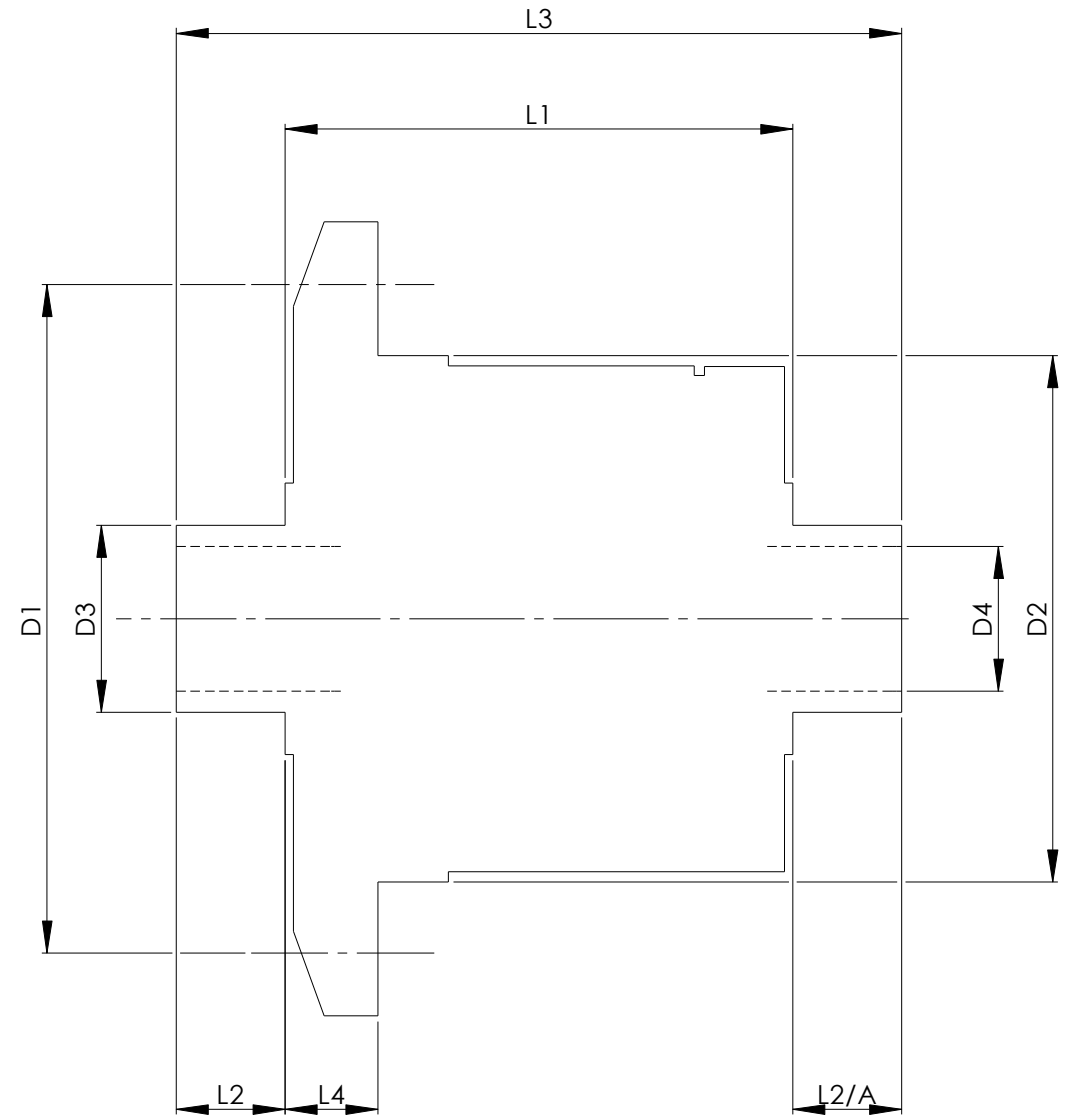


		INCH	MM
CROWN WHEEL BOLT PCD	D1	6.136	155.9
No. OF BOLTS		12	12
THREAD / THRO' HOLE		0.492	12.5
CROWN WHEEL SPIGOT DIA	D2	5.200	132.0
BEARING DIA	D3	2.363	60.0
BEARING DISTANCE	L1	6.021	153.0
SPIGOT LENGTH	L2	0.784	19.9
	L2/A	0.675	17.1
OVERALL LENGTH	L3	7.480	190.0
BEARING/CROWN WHEEL	L4	1.461	37.1
BORE	D4	1.341	34.1

DRIVE SHAFT SPLINE:-

No. OF TEETH	30
PITCH	1 MOD
TYPE	FLAT ROOT SIDE FIT
PRESSURE ANGLE	30°



TITLE R.W.D. DIFF DATA SHEET.
SCALE 1:1 U.O.S. SHEET 1 OF 1
<b>Drg. No. QDF27B</b>

**Quaife Design & Development.**

IF IN DOUBT, ASK.

THIS DRAWING OR DESIGN IS STRICTLY CONFIDENTIAL & THE COPYRIGHT THEREIN IS THE EXCLUSIVE PROPERTY OF R.T. QUAIFF ENGINEERING LTD. AND MAY NOT BE LOANED, COPIED OR EXHIBITED WITHOUT THEIR WRITTEN PERMISSION.

FINISH. MACH.	GRIND@G
LIMITS. FRACT. ± 1/64".	
DEC. ± 0.005".	
MATERIAL.	
TREATMENT.	
ISSUE. 01 DATE. 16.3.10	
DRAWN BY. J.P.D.	

**Used In.** BIRDS AUTO SPECIAL