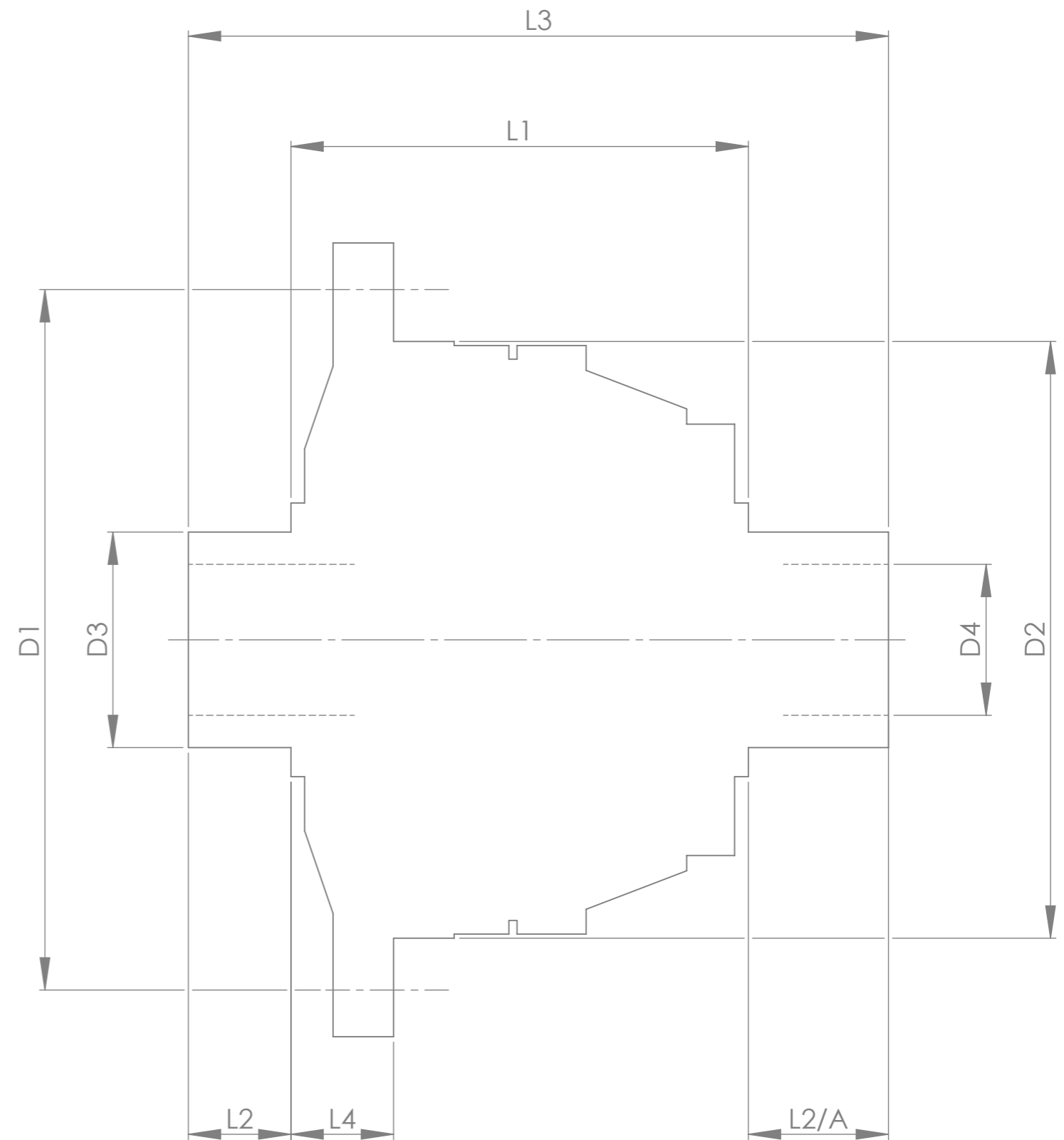


		INCH	MM
CROWN WHEEL BOLT PCD	D1	5.315	135.0
No. OF BOLTS		16	16
THREAD / THRO' HOLE		0.335	8.5
CROWN WHEEL SPIGOT DIA	D2	4.430	112.5
BEARING DIA	D3	1.773	45.0
BEARING DISTANCE	L1	3.715	94.4
SPIGOT LENGTH	L2	0.905	23.0
	L2/A	1.062	27.0
OVERALL LENGTH	L3	5.685	144.4
BEARING/CROWN WHEEL	L4	0.472	12.0
BORE	D4	1.244	31.6
DRIVE SHAFT SPLINE:-			
No. OF TEETH		27	
PITCH		24/48 D.P.	
TYPE		FILLET ROOT SIDE FIT	
PRESSURE ANGLE		30°	



TITLE F.W.D. DIFF DATA SHEET.

SCALE 1:1 U.O.S. SHEET 1 OF 1

Drg. No. QDF35B

Quaife Design & Development.

IF IN DOUBT, ASK.

THIS DRAWING OR DESIGN IS STRICTLY CONFIDENTIAL & THE COPYRIGHT THEREIN THE EXCLUSIVE PROPERTY OF RT QUAIFFE ENGINEERING LTD. AND MAY NOT BE USED COPIED OR EXHIBITED WITHOUT THEIR WRITTEN PERMISSION.

FINISH. MACH, GRIND@G
 LIMITS. FRACT. ± 1/64".
 DEC. ± 0.005".
 MATERIAL.
 TREATMENT.
 ISSUE. 01 DATE. 12.3.26
 DRAWN BY. J.P.D.
Used In. MERCEDES W212 E63
 4MATIC FRONT DIFF