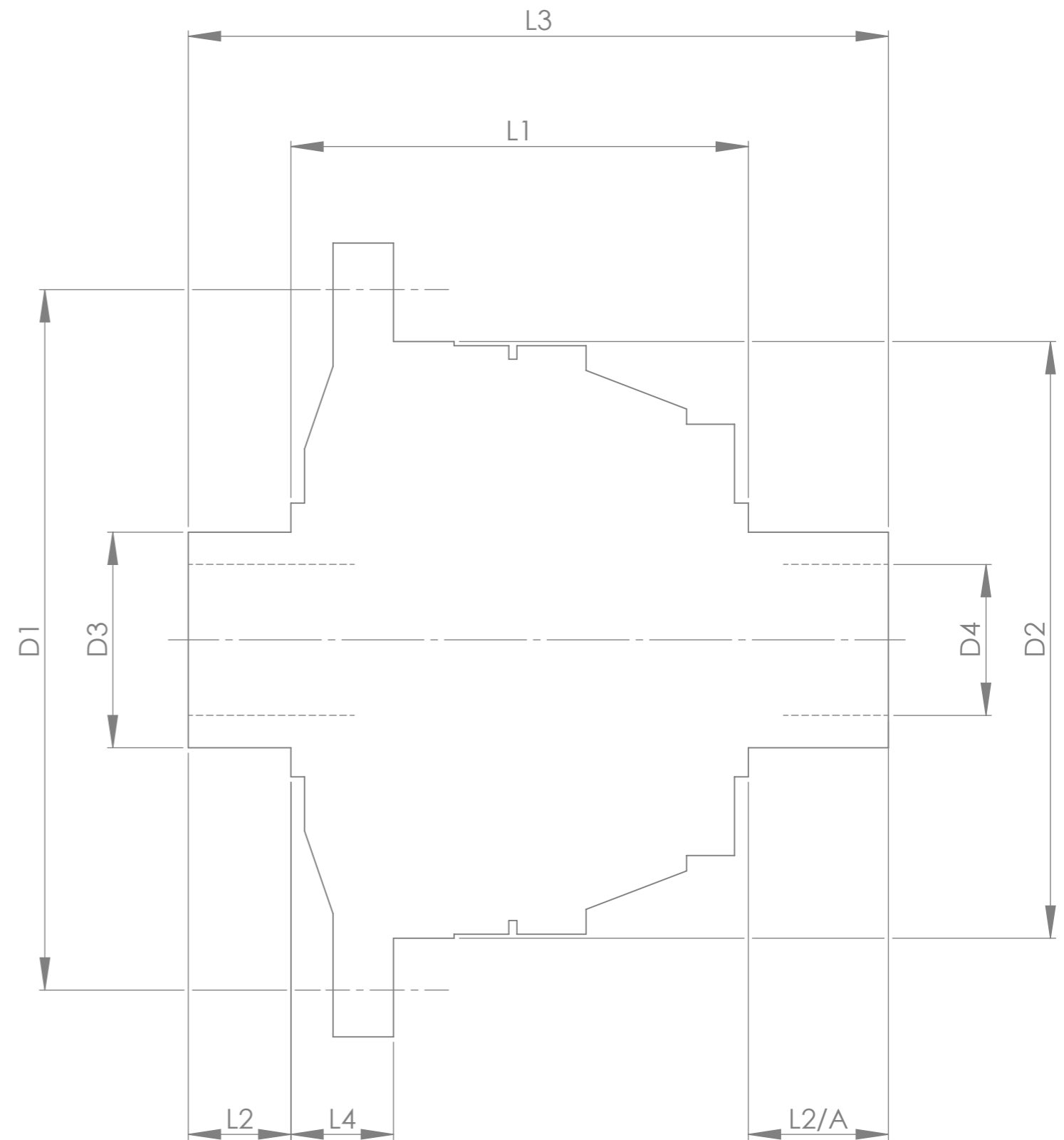


		INCH	MM
CROWN WHEEL BOLT PCD	D1	5.906	150.0
No. OF BOLTS		10	10
THREAD / THRO' HOLE		0.524	13.3
CROWN WHEEL SPIGOT DIA	D2	4.528	115.0
BEARING DIA	D3	1.853	47.1
BEARING DISTANCE	L1	5.569	141.5
SPIGOT LENGTH	L2	0.748	19.0
	L2/A	0.748	19.0
OVERALL LENGTH	L3	7.065	179.5
BEARING/CROWN WHEEL	L4	0.876	22.3
BORE	D4	1.260	32.0

DRIVE SHAFT SPLINE:-

No. OF TEETH	30
PITCH	1 MOD
TYPE	FILLET ROOT SIDE FIT
PRESSURE ANGLE	45°



TITLE R.W.D. DIFF DATA SHEET.
SCALE 1:1 U.O.S. SHEET 1 OF 1
Drg. No. QDF21L

Quaife Design & Development.

IF IN DOUBT, ASK.

THIS DRAWING OR DESIGN IS STRICTLY CONFIDENTIAL & THE COPYRIGHT THEREIN IS THE EXCLUSIVE PROPERTY OF RT QUAIFFE ENGINEERING LTD. AND MAY NOT BE USED COPIED OR EXHIBITED WITHOUT THEIR WRITTEN PERMISSION.

FINISH. MACH,	GRIND@G
LIMITS. FRACT. ± 1/64".	
DEC. ± 0.005".	
MATERIAL.	
TREATMENT.	
ISSUE. 01 DATE. 10/07/18	
DRAWN BY. J.P.D.	
Used In.	NISSAN R190 DIFF