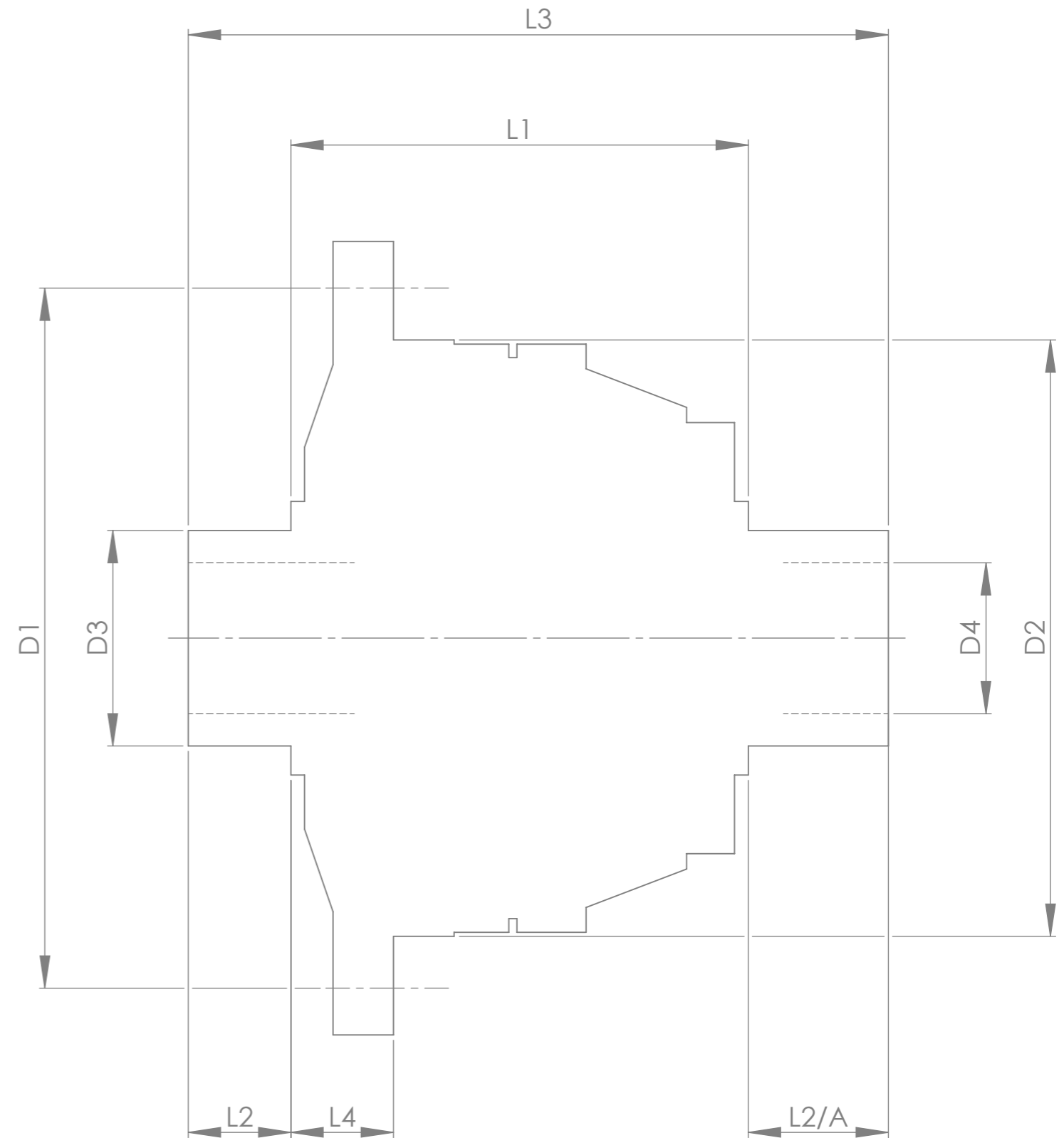


		INCH	MM
CROWN WHEEL BOLT PCD	D1	5.709	145.0
No. OF BOLTS		10	
THREAD / THRO' HOLE		THREADED	M12x1.25
CROWN WHEEL SPIGOT DIA	D2	4.568	116.0
BEARING DIA	D3	1.783	45.3
	D3/A	1.773	45.0
BEARING DISTANCE	L1	3.339	84.8
SPIGOT LENGTH	L2	1.295	32.9
	L2/A	0.799	20.3
OVERALL LENGTH	L3	5.433	138.0
BEARING/CROWN WHEEL	L4	1.030	26.2
BORE	D4	1.245	31.6
DRIVE SHAFT SPLINE:-			
No. OF TEETH		27	
PITCH		24/48 D.P.	
TYPE		FILLET ROOT SIDE FIT	
PRESSURE ANGLE		30°	



TITLE F.W.D. DIFF DATA SHEET.
SCALE 1:1 U.O.S. SHEET 1 OF 1
<b>Drg. No.</b> QDF67Z

**Quaife Design & Development.**

IF IN DOUBT, ASK.

THIS DRAWING OR DESIGN IS STRICTLY CONFIDENTIAL & THE COPYRIGHT THEREIN IS THE EXCLUSIVE PROPERTY OF RT QUAIFFE ENGINEERING LTD. AND MAY NOT BE USED COPIED OR EXHIBITED WITHOUT THEIR WRITTEN PERMISSION.

FINISH. MACH,	GRIND@G
LIMITS. FRACT. ± 1/64".	
DEC. ± 0.005".	
MATERIAL.	
TREATMENT.	
ISSUE. 01 DATE. 24/03/2020	
DRAWN BY. J.B.P.	
<b>Used In.</b>	FORD DCT DIFF