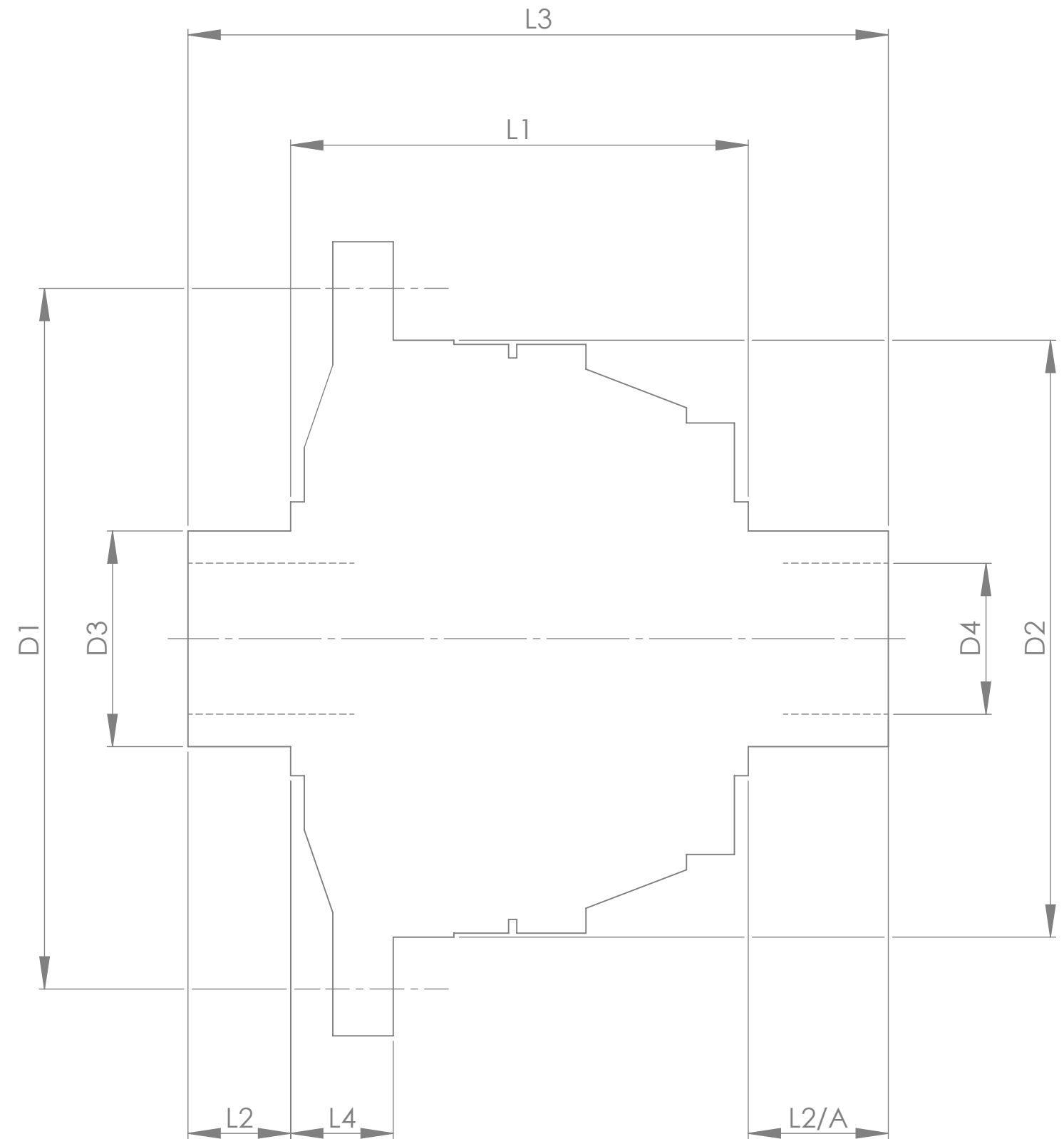


		INCH	MM
CROWN WHEEL BOLT PCD	D1	5.512	140
No. OF BOLTS		10	10
THREAD / THRO' HOLE		M10x1.5	M10x1.5
CROWN WHEEL SPIGOT DIA	D2	4.567	116
BEARING DIA	D3	1.500	38.1
BEARING DISTANCE	L1	3.661	93
SPIGOT LENGTH	L2	0.744	18.9
	L2/A	0.744	18.9
OVERALL LENGTH	L3	5.150	130.8
BEARING/CROWN WHEEL	L4	0.606	15.4
BORE	D4	1.075	27.3
DRIVE SHAFT SPLINE:-			
No. OF TEETH		34	
PITCH		32/64 DP	
TYPE		FILLET ROOT	SIDE FIT
PRESSURE ANGLE		30 DEG	



TITLE F.W.D. DIFF DATA SHEET.
SCALE 1:1 U.O.S. SHEET 1 OF 1
<b>Drg. No.</b> QDF16M

FINISH. MACH,	GRIND@G
LIMITS. FRACT. ± 1/64".	
DEC. ± 0.005".	
MATERIAL.	
TREATMENT.	
ISSUE. 01	DATE. 12/06/2023
DRAWN BY. J.B.P.	
<b>Used In.</b>	RENAULT CLIO MK4 RS ATB DIFFERENTIAL

IF IN DOUBT, ASK.

**Quaife Design & Development.**

THIS DRAWING OR DESIGN IS STRICTLY CONFIDENTIAL & THE COPYRIGHT THEREIN IS THE EXCLUSIVE PROPERTY OF RT QUAIFF ENGINEERING LTD. AND MAY NOT BE USED COPIED OR EXHIBITED WITHOUT THEIR WRITTEN PERMISSION.