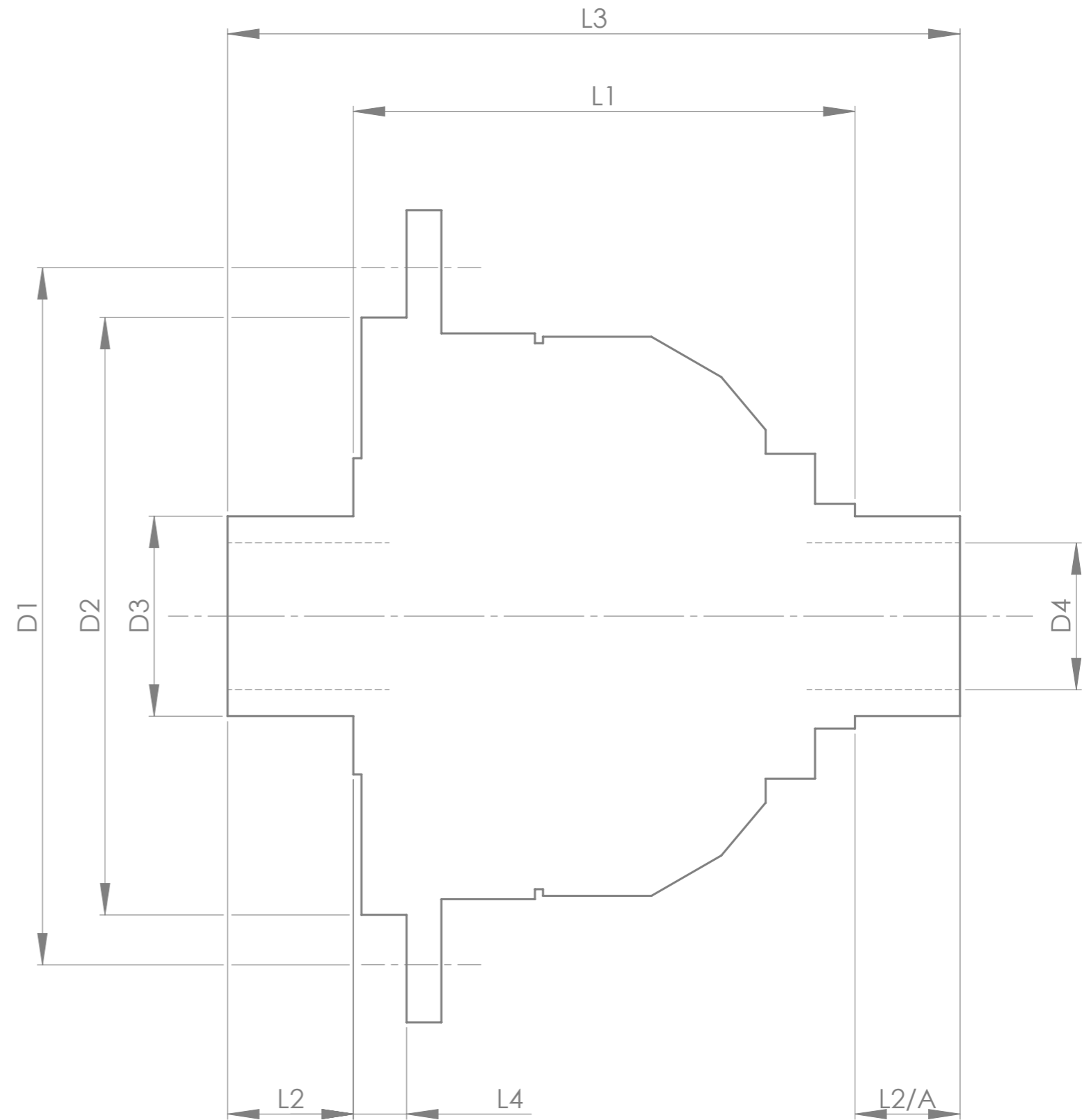


|                        |      | INCH                 | MM    |
|------------------------|------|----------------------|-------|
| CROWN WHEEL BOLT PCD   | D1   | 6.378                | 162.0 |
| No. OF BOLTS           |      | -                    | 12    |
| THRO' HOLE Ø           |      | 0.421                | 10.7  |
| CROWN WHEEL SPIGOT DIA | D2   | 5.276                | 134.0 |
| BEARING DIA            | D3   | 1.972                | 50.1  |
| BEARING DISTANCE       | L1   | 5.240                | 133.1 |
| SPIGOT LENGTH          | L2   | 0.827                | 21.0  |
|                        | L2/A | 0.827                | 21.0  |
| OVERALL LENGTH         | L3   | 6.894                | 175.1 |
| BEARING/CROWN WHEEL    | L4   | 0.984                | 25.0  |
| BORE                   | D4   | 1.339                | 34.0  |
| DRIVE SHAFT SPLINE:-   |      |                      |       |
| No. OF TEETH           |      | 41                   |       |
| PITCH                  |      | 32/64 D.P.           |       |
| TYPE                   |      | FILLET ROOT SIDE FIT |       |
| PRESSURE ANGLE         |      | 30°                  |       |



TITLE F.W.D. DIFF DATA SHEET.

SCALE 1:1 U.O.S. SHEET 1 OF 1

**Drg. No. QDF65Z**

**Quaife Design & Development.**

IF IN DOUBT, ASK.

THIS DRAWING OR DESIGN IS STRICTLY CONFIDENTIAL & THE COPYRIGHT THEREIN IS THE EXCLUSIVE PROPERTY OF RT QUAIPE ENGINEERING LTD. AND MAY NOT BE USED COPIED OR EXHIBITED WITHOUT THEIR WRITTEN PERMISSION.

FINISH. MACH, GRIND@G  
 LIMITS. FRACT. ± 1/64".  
 DEC. ± 0.005".  
 MATERIAL.  
 TREATMENT.  
 ISSUE. 01 DATE. 26/05/2017  
 DRAWN BY. J.B.P.

**Used In. FORD TRANSIT FWD**