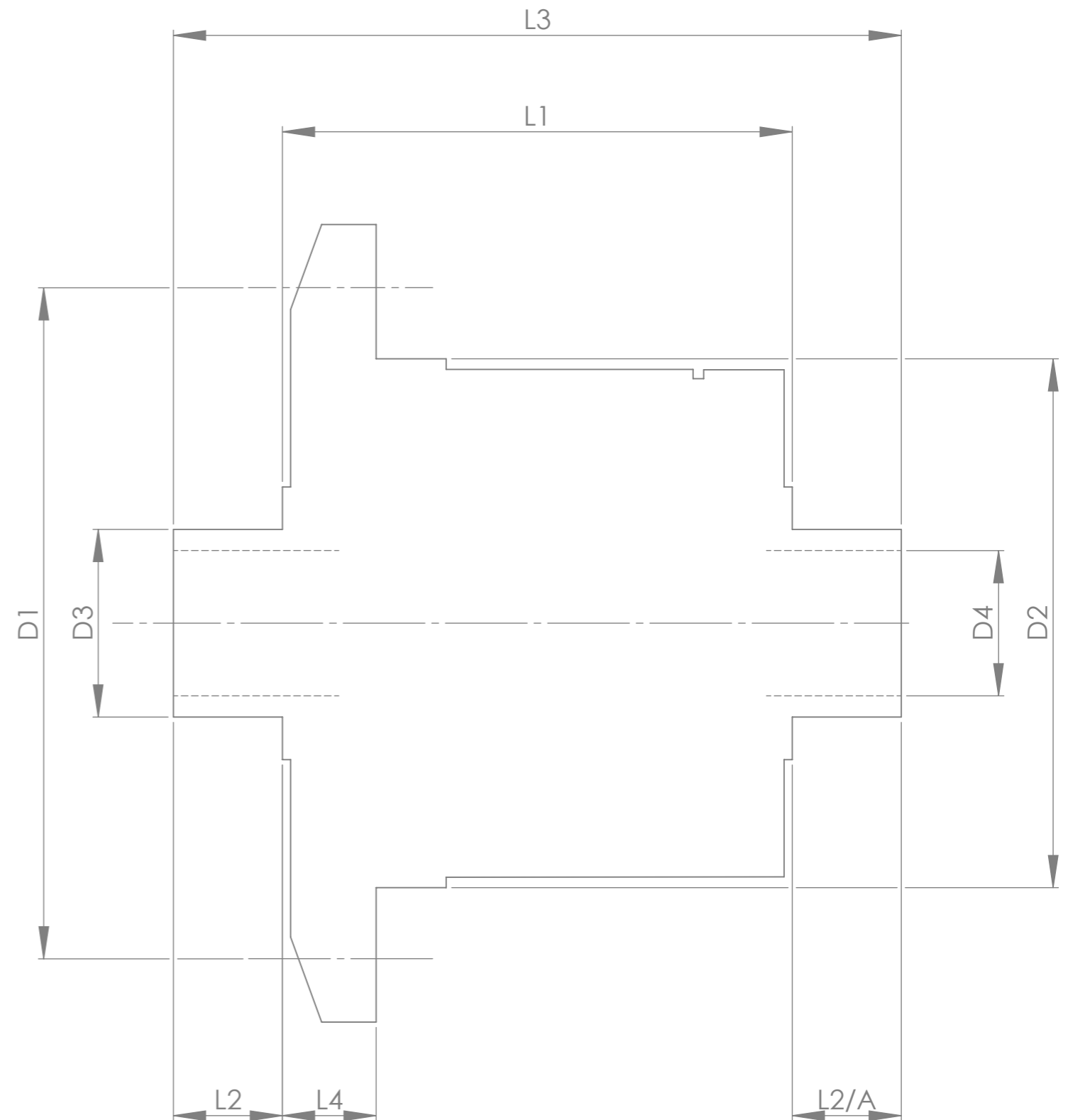


		INCH	MM
CROWN WHEEL BOLT PCD	D1	5.000	127.0
No. OF BOLTS		8	
THREAD / THRO' HOLE		0.394	10.0
CROWN WHEEL SPIGOT DIA	D2	4.249	107.92
BEARING DIA	D3	1.626	41.30
BEARING DISTANCE	L1	4.585	116.46
SPIGOT LENGTH	L2	0.815	20.70
	L2/A	0.820	20.83
OVERALL LENGTH	L3	6.220	157.99
BEARING/CROWN WHEEL	L4	1.125	28.58
BORE	D4	1.198	30.4
DRIVE SHAFT SPLINE:-			
No. OF TEETH		10	
PITCH			
TYPE		STRAIGHT SIDED	
PRESSURE ANGLE			



TITLE	QUAIFE VOLVO PV544 B18 (655585) ATB DIFFERENTIAL
SCALE	1:1 U.O.S. SHEET 1 OF 1
Drg. No.	QDF16J

**Quaife Design & Development.**

IF IN DOUBT, ASK.

THIS DRAWING OR DESIGN IS STRICTLY CONFIDENTIAL & THE COPYRIGHT THEREIN IS THE EXCLUSIVE PROPERTY OF RT QUAIFE ENGINEERING LTD. AND MAY NOT BE USED COPIED OR EXHIBITED WITHOUT THEIR WRITTEN PERMISSION.

FINISH.	MACH, \$field4 GRIND@G
LIMITS. FRACT.	± 1/64".
	DEC. ± 0.005".
MATERIAL.	
TREATMENT.	
ISSUE.01	DATE.17/08/2016
DRAWN BY.A.N.	CHECKED BY.J.P.D.
Used In.	VOLVO PV544 B18 (655585)