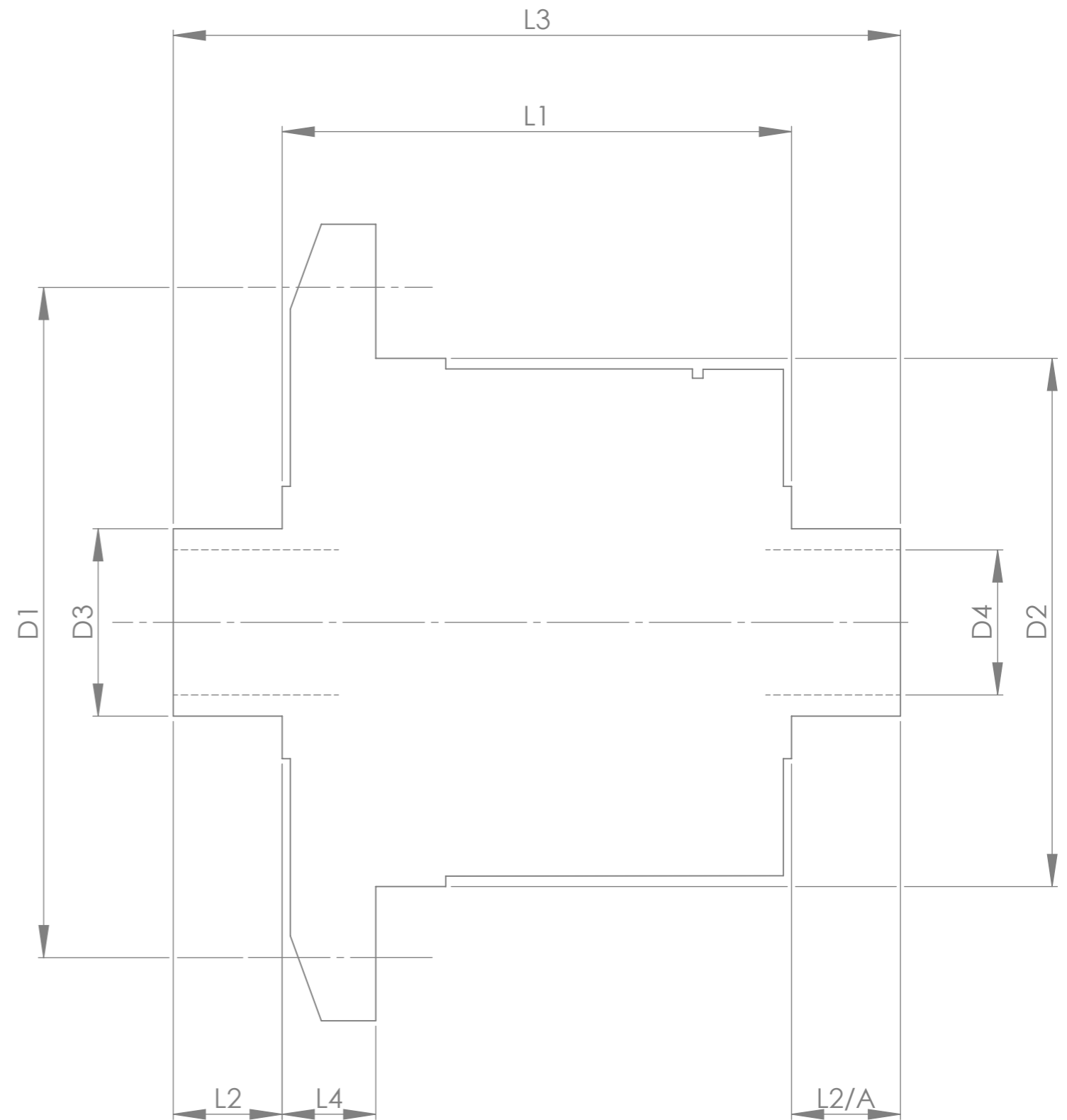


		INCH	MM
CROWN WHEEL BOLT PCD	D1	5.906	150.0
No. OF BOLTS			16
THREAD / THRO' HOLE			THRO'
CROWN WHEEL SPIGOT DIA	D2	5.001	127.0
BEARING DIA	D3	2.166	55.0
BEARING DISTANCE	L1	5.827	148.0
SPIGOT LENGTH	L2	0.866	22.0
	L2/A	0.866	22.0
OVERALL LENGTH	L3	7.559	192.0
BEARING/CROWN WHEEL	L4	1.673	42.5
BORE	D4	1.418	36.0
DRIVE SHAFT SPLINE:-			
No. OF TEETH		26	
PITCH		20/40 D.P.	
TYPE		FLAT ROOT SIDE FIT	
PRESSURE ANGLE		30	



TITLE R.W.D. DIFF DATA SHEET.

SCALE 1:1 U.O.S. SHEET 1 OF 1

**Drg. No.** QDF50B

**Quaife Design & Development.**

IF IN DOUBT, ASK.

THIS DRAWING OR DESIGN IS STRICTLY CONFIDENTIAL & THE COPYRIGHT THEREIN IS THE EXCLUSIVE PROPERTY OF RT QUAIFFE ENGINEERING LTD. AND MAY NOT BE USED COPIED OR EXHIBITED WITHOUT THEIR WRITTEN PERMISSION.

FINISH. MACH, GRIND@G  
 LIMITS. FRACT. ± 1/64".  
 DEC. ± 0.005".  
 MATERIAL.  
 TREATMENT.  
 ISSUE. 01 DATE. 09/05/2024  
 DRAWN BY. L.C.  
**Used In.** MERCEDES VITO  
 (W639 V6 2007)