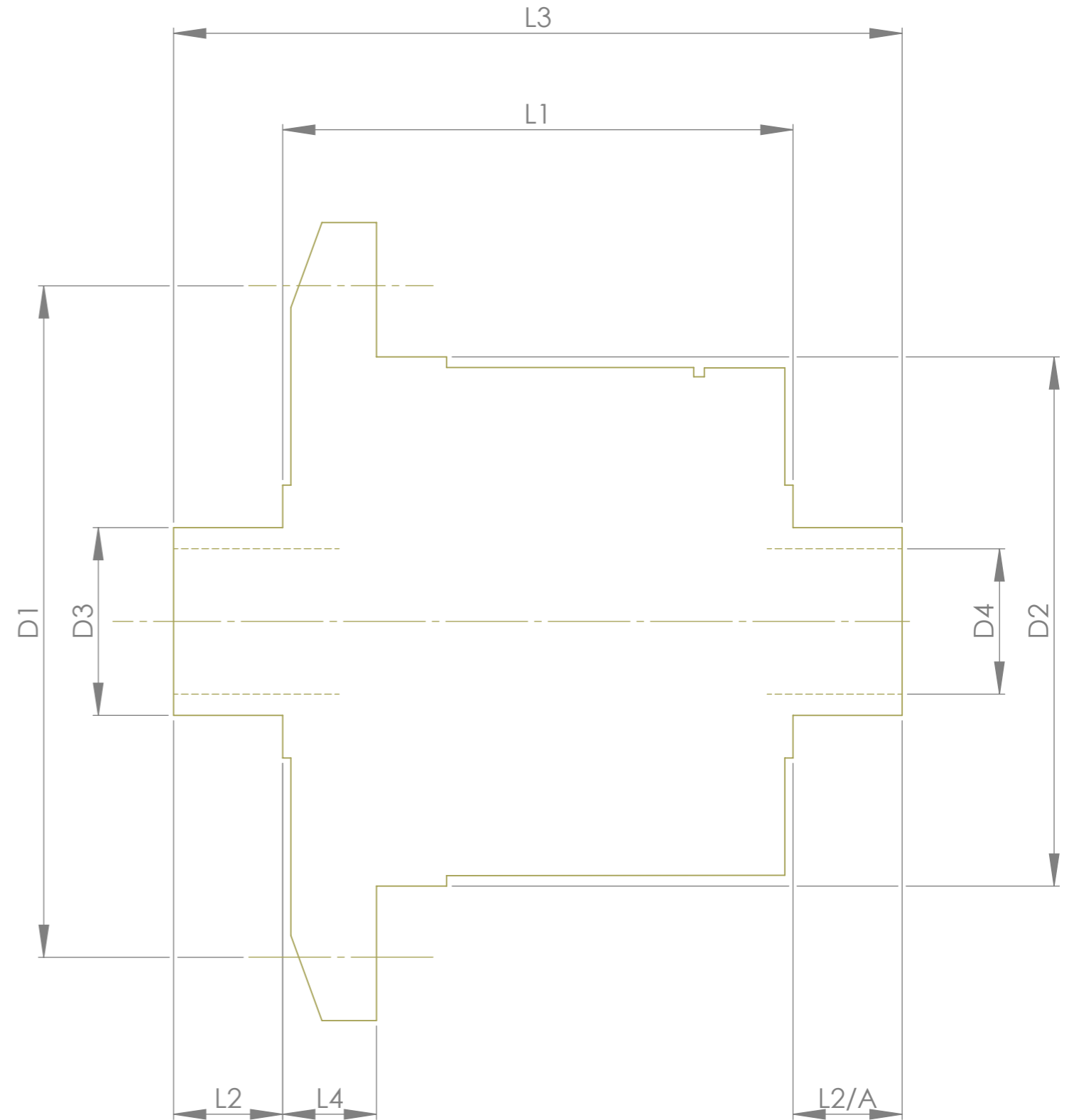


		INCH	MM
CROWN WHEEL BOLT PCD	D1	5.827	148.0
No. OF BOLTS			10
THREAD / THRO' HOLE		0.484	12.3
CROWN WHEEL SPIGOT DIA	D2	5.002	127.0
BEARING DIA	D3	2.127	54.0
BEARING DISTANCE	L1	4.529	115.0
SPIGOT LENGTH	L2	0.768	19.5
	L2/A	0.768	19.5
OVERALL LENGTH	L3	6.063	154.0
BEARING/CROWN WHEEL	L4	0.846	21.5
BORE	D4	1.418	36.0
DRIVE SHAFT SPLINE:-			
No. OF TEETH		26	
PITCH		20/40 D.P.	
TYPE		FLAT ROOT SIDE FIT	
PRESSURE ANGLE		30°	



TITLE R.W.D. DIFF DATA SHEET.

SCALE 1:1 U.O.S. SHEET 1 OF 1

Drg. No. QDF55B

Quaife Design & Development.

IF IN DOUBT, ASK.

THIS DRAWING OR DESIGN IS STRICTLY CONFIDENTIAL & THE COPYRIGHT THEREIN IS THE EXCLUSIVE PROPERTY OF RT QUAIFFE ENGINEERING LTD. AND MAY NOT BE USED, COPIED OR EXHIBITED WITHOUT THEIR WRITTEN PERMISSION.

FINISH. MACH, GRIND@G
 LIMITS. FRACT. ± 1/64".
 DEC. ± 0.005".
 MATERIAL.
 TREATMENT.
 ISSUE. 01 DATE. 23/01/2025
 DRAWN BY. J.B.P.
Used In. MERCEDES W903 T1N
 3.727 RATIO (US SPEC)